



2023-2024 EXECUTIVE BOARD STRUCTURE

THE CABINET

President

Paul Welsh
Finance Member

President-elect

Angie Cooksy
Conference Chair
Finance Member

Past President

Brian Hodges
Credentials Chair
Nominating Chair
Past Presidents Advisory Chair
Finance Member

Treasurer

Mike Gavic
Finance Chair

Treasurer-elect

Christian Brown
Prof. Dev. Grants Chair
IL College Fair Member
Finance Member

Past Treasurer

Josie Blasdel
Conference Member
Finance Member

Secretary

Kathryn Hankamp
Media Member
Finance Member (NV)

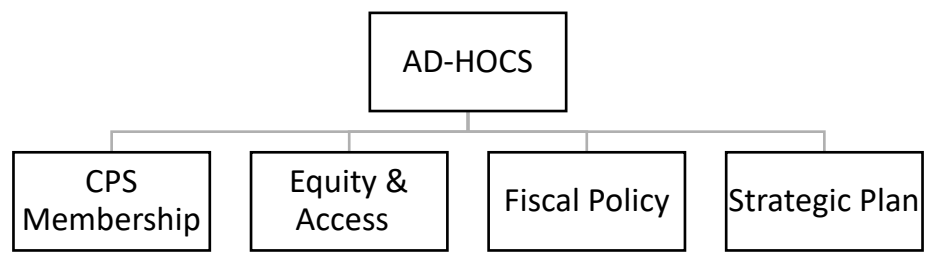
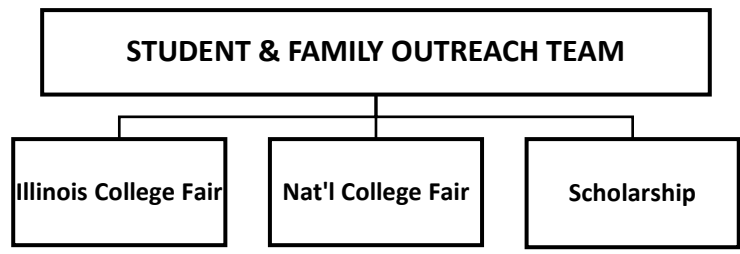
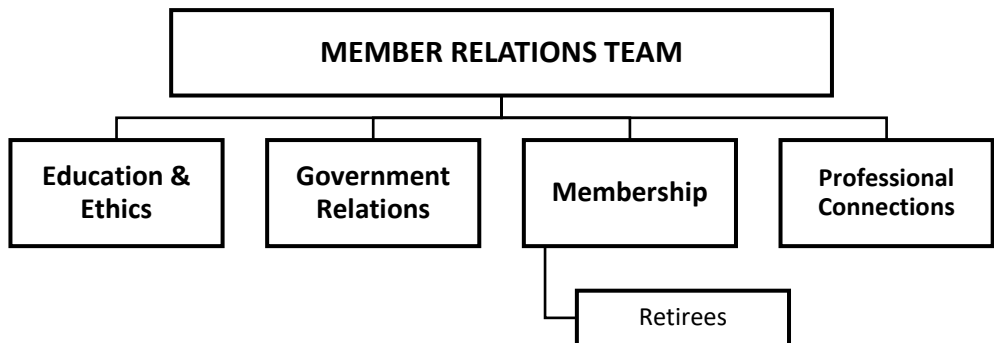
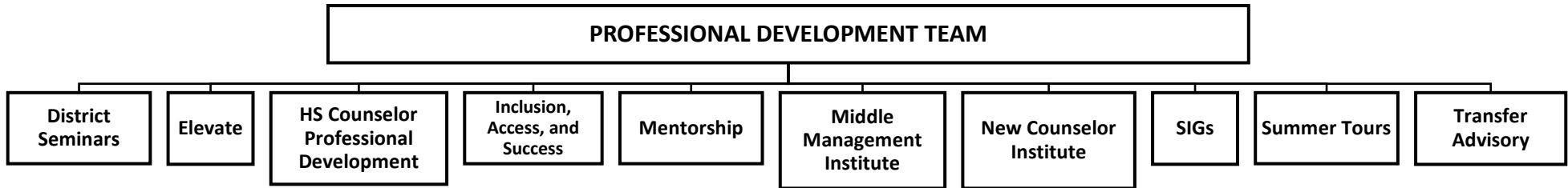
Secretary-elect

Scott Carlson
Finance Member (NV)

Executive Director (NV)

Erin Hoover
Strategic Plan Chair
Conference Member
Finance Member

BOARD TEAMS & COMMITTEES: 12 Directors co-chair the following teams and oversee that team's committees.
Board Directors: Derek Brinkley (PS-1), Becki Bellito (S-1), Maddie Corder (S-1), Betsy Stevens (PS-1), Joe Freeman (S-2), Evan Wilson (PS-2), Shawn Wochner (S-2), Ashley Brown (PS-3), Meghan Chrum (SO-3), Cody Dailey (S-3), Rejeannda Robinson (PS-3), Maira Rodriguez (PS-3)



KEY
 NV: Non-voting

IACAC EXECUTIVE BOARD STRUCTURE

This document is intended to capture the organizational chart and structure of the IACAC Executive Board Cabinet, Board and Committee make-up in a given year. It will be updated each year by the Secretary. The Cabinet section of this document outlines the members who serve on the Cabinet as well as their assignments outlined in the IACAC Leadership Manual.

The Board Teams & Committees section identifies which committees function under each of the 4 Board Teams. Directors co-chair one of these 4 Board Teams. In addition to their roles as co-chairs, they serve as liaisons to specific committees within a team. As liaisons, they guide a particular committee and act as a conduit/messenger between the committee and the Executive Board. For example, a Board Team Director could be assigned to co-chair the Member Relations Board Team therefore overseeing the interaction among all committees within that team. Additionally, that Director would also be assigned as the liaison to at least one specific standing or ad-hoc committee.

2023-2024 ASSIGNMENTS

COMMITTEES	COUNCIL TEAM	LIAISON	COMMITTEE CHAIR(S)
Education and Ethics	Member Relations	Joe Freeman/April Lynch	Keegan White, Sarah Daugherty
Chicago Public Schools Ad-Hoc	<i>Ad-hoc</i>	Paul Welsh	Josh Stober, Sylvia Hernandez
Conference	<i>Cabinet</i>	Angie Cooksy	Chrissy Grotzke, Jennifer Sloan, Alex Salas
Credentials	<i>Cabinet</i>	Brian Hodges	
District Seminars	Professional Development	Meghan Chrum	April Lynch, Brad Kain, Annette Braden, Kerri Henry
Elevate	Professional Development	Ashley Brown	Courtney Wallace
Equity and Access Ad-Hoc	<i>Ad-hoc</i>	Paul Welsh	Amy Thompson, Sharon Williams
Finance	<i>Cabinet</i>	Mike Gavic	
Fiscal Policy Ad-Hoc	<i>Ad-hoc</i>	Paul Welsh	Tony Minestra
Government Relations	Member Relations	Evan Wilson	Alex Campos, Kristina Luster, Will Schuneman
High School Counselor Professional Development	Professional Development	Cody Dailey	Beth Gilfillan, Myskeshia Mitchell, Nicole Simon
Illinois College Fair	Student and Family Outreach	Betsy Stevens	Tara Brewer, Kelli Allen, Moises Orozco
Inclusion, Access, and Success	Professional Development	Derek Brinkley	Branden Delk, Lupe Flores, Scott Hillman
Membership	Member Relations	Maira Rodriguez	Sarah Goldman, Alex Hughes, Sylvia Hernandez
Membership (Retirees)	Member Relations	Maira Rodriguez	Lianne Musser, BC Juettner, Leah Piekarz
Mentorship	Professional Development	Maddie Corder	Kevin Coy, Jill Homerding, Margaret Jones
Middle Management Institute	Professional Development	Ashley Brown	Robert Olivieri, Tyler Olsen
National College Fair	Student and Family Outreach	Derek Brinkley	Jennifer Stroh, Lauren Yates
New Counselor Institute	Professional Development	Maira Rodriguez	Kenneth Guthrie, Bettie Mattison-Farris, Brian Harris
Nominating	<i>Cabinet</i>	Brian Hodges	
Professional Development Grants	<i>Cabinet</i>	Christian Brown	
Professional Connections	Member Relations	Meghan Chrum	Morgan Johnson, Robyn Moreth
Scholarship	Student and Family Outreach	Cody Dailey	Chris Merle, Beth Gulden, Lavon Robinson
SIGs	Professional Development	Rejeannda Robinson	Melinda Arce-Gudino, Mariya Chukas
Strategic Plan Ad-hoc	<i>Cabinet</i>	Paul Welsh	Erin Hoover, Board Directors
Summer Tours	Professional Development	Becki Bellito	Paul Lichtenheld, Kara Dollaske, Sarah McDougal
Transfer Advisory	Professional Development	Rejeannda Robinson	Nick DeFalco, Holly Pflum, Ashley Berlett