



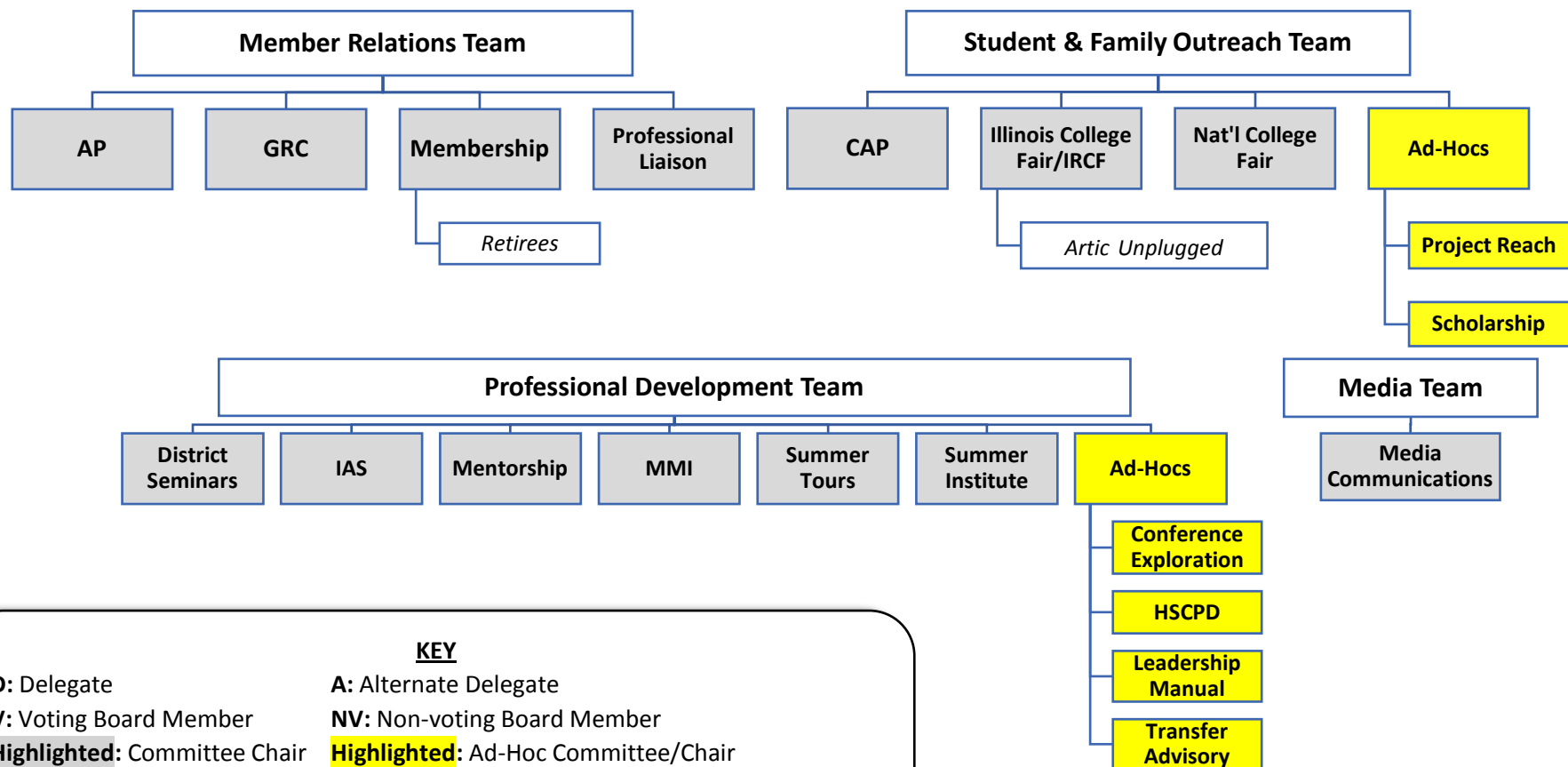
2015-2016 IACAC EXECUTIVE BOARD STRUCTURE AND FUNCTIONS

Cabinet ("The Cabinet")

President (D, V)	President-Elect (A, V) <i>Annual Conference Chair</i>	Past-President (D, V) <i>Nominations & Credentials Chair</i> <i>Past Presidents Advisory</i> Strategic Plan Chair	Treasurer (V) <i>Finance Chair</i>	Treasurer-Elect (V) <i>Professional Dev. Grants Chair</i> <i>IL College Fair Comm Mmbr</i>	Past-Treasurer (V)	Secretary (V) <i>Media Comm</i> <i>Liaison</i>	Executive Assistant (NV) <i>Annual Conference Comm</i> <i>Mmbr</i> <i>Finance Comm Mmbr</i>
-------------------------	---	--	--	---	---------------------------	---	---

Directors/Delegates Council ("The Council")

Each team will be chaired by a minimum of 2 voting directors/delegates; all delegates & directors are voting members of the Board. Directors serve 2-year terms, NACAC membership NOT REQUIRED. Delegates serve 3-year terms, NACAC membership REQUIRED.



KEY

D: Delegate
V: Voting Board Member
Highlighted: Committee Chair
Italicized: Sub-committee Chair
A: Alternate Delegate
NV: Non-voting Board Member
Highlighted: Ad-Hoc Committee/Chair

2015-2016 Cabinet (7) & Council (4 Dir + 9 Del) = 20 voting members