



GOVERNORS STATE UNIVERSITY

COUNSELOR UPDATES

2022 - 2023



govst.edu



CHERYL GREEN, PH.D.

President, Governors State University

Dear Counselors,

Thank you for your interest in Governors State University (GSU), and for sharing our mission of providing an exceptional, accessible education for your students.

Your students look to you for guidance on their higher education admission process. We know that it takes collaboration to deliver the information that students need to navigate the college selection process. You play an essential role in helping them to prepare for their future, and we are grateful for all that you do to support our prospective Jaguars as they consider applying to GSU.

Governors State University boasts a campus rich in culture and celebrates the diversity of approximately 4,500 students. Our students work toward their educational goals with the help of experienced faculty and staff who are committed to their success. The average class size is 12 students to 1 faculty member. This setting promotes collaboration, conversation, and individualized instruction.

It would be a pleasure to welcome you and your students to the GSU campus for a visit to learn more about our first-year program, that has been designed to prepare our students to be successful lifelong learners. All first-year student classes are taught by full-time faculty. Our students are challenged to become critical thinkers as they explore majors and programs aligned with their career goals.

Governors State University also offers challenging and experiential learning experiences through the honors program. Eligible learners will gain leadership skills, enrich their academic experience and participate in internships and special events.

GSU offers an accessible education. We offer financial aid and scholarship opportunities for our students to ensure that higher education is attainable and degrees are achievable. I look forward to sharing in the successes of your students in their educational endeavors.

Sincerely,

Cheryl Green, Ph.D.

President, Governors State University

GSU FAST FACTS



Governors State is a four-year Illinois Public University with four different colleges, graduate, doctoral and certification programs serving the Chicago Southland, neighboring communities and Northwest Indiana.



68% of undergraduate students receive grants or scholarships



85% of Governors State alumni stay within a 50-mile radius of the university creating a mighty network and workforce.



As a liberal arts university, Governors State boasts a competitive Computer Science Program, Occupational Therapy/Physical Therapy Program, Psychology/Counseling, Accounting, and a Supply Chain Innovation and Business Incubator Center in connection with Illinois Innovation Network

Additionally, Governors State's School of Extended Learning provides pathways for life-long learning, certificate programs, and Badges that may lead to degree completion.



70% of bachelor's degree graduates are employed within six months of graduation *



40% of undergraduates are first generation college students



60% of students identify as belonging to a racial and/or ethnic minority



25 Countries represented in the student body

WHAT'S NEW AT GSU

Jaguar Transfer Credit Evaluator

GSU launched the Jaguar Transfer Credit Evaluator in December of 2021. This tool allows prospective students to see how their previous college coursework and exams contribute to their degree at GSU! The process is quick, easy, and even provides next steps for transferring

<https://govst.transfer.degree/>

Hope Chicago

GSU is one of the Hope Chicago partnership institutions, allowing incoming freshman from high schools to attend (and graduate from) college debt free!

<https://www.hopechicago.org/>

Jaguar LEAP

GSU launched its inaugural summer bridge program, "Jaguar LEAP". Over 40 students attending a 7-week, residential summer bridge program that allowed incoming freshman to complete 7 hours of general education coursework, completely free!

<https://www.govst.edu/jaguar-leap/>

Common App for Transfer

Transfer students can now complete their application to Governors State through the Common App for free! Transfer student can still also complete their application through GSU's application at

<https://apply.govst.edu/apply/>

TRIO EOC Program

The Educational Opportunity Centers program provides counseling and information on college admissions to qualified adults who want to enter or continue a program of postsecondary education. An important objective of the program is to counsel participants on financial aid options, including basic financial planning skills, and to assist in the application process with the goal of increasing the number of adult students.

<https://www.govst.edu/trioeoc/>

GSU X SIU Law Pathway

Governors State University has partnered with Southern Illinois University Carbondale to allow students to earn both a bachelors and a juris doctor (JD) degree in six years. More information to come!

Paraprofessional to Teacher Program

Do you have a student who is currently working as a paraprofessional (or is thinking of doing so?). Governors State University's Paraprofessional to Teacher program is a community based grow-your-own teacher initiative to address teacher shortages, retention issues, and teacher diversity by engaging in a variety of strategies that aim to recruit teachers from local schools to increase diversity and retention.

<https://www.govst.edu/para-to-teacher/>

Minor in Art History

A minor in Art is now available & provides students with the fundamentals of the discipline enabling them to shape perception, communicate distinct attitudes, and expand their personal boundaries.

<https://www.govst.edu/artminor/>

4,502

STUDENTS
ENROLLED

10:1

STUDENT-FACULTY
RATIO

\$313

PER CREDIT
HOUR

THE FRESHMAN EXPERIENCE

Your Freshman experience at GSU: As extraordinary as you and as practical as it needs to be so you can be a college graduate in four years flat.

Choose from seven First Year Focus Areas including Arts & Entertainment, Business, Discovery, Education, Humanities, Social & Behavioral Sciences or STEM. Be paired with one of three learning communities made up of peers and mentors you can lean on and learn from. Meet your academic advisor who will help you develop a structured, full-time schedule structured to ensure you succeed.

Already attending a community college?

Start GSU's Dual Degree Program now to lock in today's tuition rate and become part of the 91% of DDP students who have graduated or are on track to.

Schedule a virtual admission

appointment: govst.edu/admission



2.4/4.0

AVERAGE GPA FOR
CLASS OF 2025

55,064
ALUMNI

40%

FIRST-GENERATION
STUDENTS IN 2025

WE WERE BUILT FOR TRANSFER STUDENTS. DUAL DEGREE PROGRAM

In the Dual Degree Program, students enroll in full-time classes at one of 17 Chicagoland community colleges while working with a DDP Transfer Specialist to map out a pathway to two degrees. DDP students receive a multitude of benefits—among them a locked-in tuition rate, full-tuition scholarship opportunities, and a more affordable education.

When students complete an associate degree, they are even more likely to obtain further education—our numbers prove it. More than 80% of DDP students complete a bachelors or are on track to complete a bachelors degree.

View a list of participating DDP colleges at govst.edu/DDP

JAGUAR TRANSFER CREDIT EVALUATOR

GSU launched the Jaguar Transfer Credit Evaluator in December of 2021. This tool allows prospective students to see how their previous college coursework and exams contribute to their degree at GSU! The process is quick, easy, and even provides next steps for transferring.

<https://govst.transfer.degree/>

TRANSFER GUIDES

GSU strives to make your transfer process as seamless as possible by offering transfer guides with area community colleges to assist in the transfer process. Check out the transfer guides at govst.edu/TransferGuides.

Don't see your specific school or program listed? Transferring is still an option! Contact the Office of Admissions at admission@govst.edu to discuss how your program will transfer.

PRIOR LEARNING ASSESSMENT

Not all learning happens within university walls. Prior Learning Assessment (PLA) is a process used to evaluate and provide college credit for the knowledge you have obtained through areas outside of the academic setting. Learn more and take a self-assessment at govst.edu/PLA.

UNIVERSITY HOUSING

Prairie Place provides convenient, cost-effective housing options for undergraduate and graduate students. Choose from suites with a connecting bathroom or apartments (two and four bedrooms with full kitchen and bathroom). Housing costs per semester range from \$3,399 for a semi-suite, double occupancy bedroom to \$4,812 for a four-bedroom, single occupancy apartment—wireless access, cable, and utilities are included.

Applications for fall housing will be available online starting in March 2023. Early application and deposit are advised.

For information, contact the Department of University Housing:
708.235.7115

housing@govst.edu

www.govst.edu/housing

ATHLETICS

Part of the National Association of Intercollegiate Athletics, GSU student-athletes shine on the field and in the classroom. In 2018, the men's basketball team took home a CCAC championship—the first in university history.

2022–23 GSU Competitive Sports

Men's and Women's Basketball

Men's and Women's Cross Country

Men's and Women's Golf

Men's and Women's Soccer

Varsity Reserves Teams

Men's and Women's Basketball

Men's and Women's Soccer

Women's Volleyball

For more information, contact Tony Bates, Athletic Director and Men's Basketball Head Coach, at abates99@govst.edu or 708.235.7431.

www.gsujaguars.com

Complete the Prospective Athlete Interest Form:

govst.edu/gsu-recruit

GSU athletic scholarships are available to qualified students.



UNDERGRADUATE PROGRAMS

BUSINESS

Accounting (B.S.)
Business Administration (B.A.)
Concentrations in: Entrepreneurship, Finance,
Human Resource Management, Management,
Management Information Systems, Marketing,
Operations and Supply Chain Management
Business and Applied Science (B.A.)
Economics (B.A.)
Manufacturing Management (B.A.)

HUMANITIES, SOCIAL SCIENCES, AND THE ARTS

Anthropology and Sociology (B.A.)
Art (B.F.A.)
Communication (B.A.)
Criminal Justice (B.A.)
English (B.A.)
Gender and Sexuality Studies (B.A.)
History (B.A.)
Interdisciplinary Studies (B.A.)
Media Studies (B.A.)
Political Science (B.A.)
Theatre and Performance Studies (B.A.)

SCIENCES, MATHEMATICS, AND COMPUTER SCIENCE

Biology (B.S.)
Chemistry (B.S.)
Computer Science (B.S.)
Information Technology (B.S.)
Mathematics (B.A.)
Concentrations in General Mathematics and
Actuarial Science

HEALTH AND HUMAN SERVICES

Communication Disorders (B.H.S.)
Community Health (B.H.S.)
Health Administration (B.H.A.)
Health Informatics (B.S.)
Nursing (R.N. to B.S.N.)
Social Work (B.S.W.)

EDUCATION

Early Childhood Education – Licensure and
Non-Licensure (B.A.)
Math Teacher Ed
Biology Teacher Ed
Chemistry Teacher Ed
English Teacher Ed
Elementary Education (B.A.)
Psychology
Concentrations in: General, Forensic, Mindfulness
Studies, Pre-Clinical (B.A.)
Social Studies Teacher Ed

For a full listing of programs, including graduate and doctoral, visit www.govst.edu/programlisting.

40%

OF UNDERGRADUATES
ARE FIRST-GENERATION
COLLEGE STUDENTS

54%

OF STUDENTS IDENTIFY
AS BELONGING TO A
RACIAL AND/OR
ETHNIC MINORITY

25

COUNTRIES
REPRESENTED IN
STUDENT BODY

68%

OF UNDERGRADUATE
STUDENTS RECEIVE
GRANTS OR SCHOLARSHIPS

APPLICATION REQUIREMENTS



To apply today, complete an application online at apply.govst.edu/apply.
Freshman and transfer students can now apply through the common app!

Your application will be complete once you provide the following:

FIRST-YEAR STUDENTS:

- Must have a minimum of 2.0 unweighted high school GPA on a 4.0 scale
- Submission of official ACT or SAT scores is optional. Test scores will only be considered if they are helpful to the student.
- Earned fewer than 24 semester hours of college credit to start GSU as a first-year
- Official high school transcript or GED must be submitted
- Optional supplemental documents (AP scores, IB scores, resumes, letters of recommendation, personal statement, etc.) are encouraged to aid in holistic review of the student's application.
- Holistic review process- students are strongly encouraged to submit supplemental information including letters of recommendation, resume, sports and student activities, and/or personal statements.

TRANSFER STUDENTS:

- \$25 application fee
- Official transcripts from all previously attended institutions
- Supplemental items required for your selected degree program. Applicants must have earned a 2.0 or higher GPA and a minimum of 24 transferable college level credit hours.
- Applicants must also be in good standing at their last institution attended. Some programs have special admission requirements.



TO APPLY

<https://www.govst.edu/apply>





FINANCIAL AID & SCHOLARSHIPS

FINANCIAL AID

Our goal is to assist you and your family to help create a comprehensive aid award that fits your family's unique circumstances by securing the resources necessary to fund your education. The Financial Aid Office is available year-round and committed to helping you navigate the financial aid process.

Important Dates for 2023-2024 Aid Year

Please use the Governors State School code: 009145

FAFSA Application available online	October 1, 2022
Begin reviewing "Check List" in the Financial Aid Self-Service portal	February, 2023
Financial Aid Award Packaging begins	March, 2023
Summer 2023 Financial Aid Application available	February 2023



APPLY FOR FINANCIAL AID

Accessing financial aid begins by completing the [Free Application for Federal Student Aid](#), or FAFSA. Be sure to use Governors State University's School Code: **009145**.

For an more information on Financial Aid go to <https://www.govst.edu/financial-aid/>.

You can also go to <https://studentaid.gov/> for even deeper explanation on applying for Financial Aid.

SCHOLARSHIP OPPORTUNITIES

GSU offers a variety of institutional scholarships based on academic merit, personal achievement, or financial need. The university's new Scholarship Universe software helps students find, match, and apply for scholarships directly tailored to their needs and goals.

Presidential, Provost, and Dean's scholarships recur over eight consecutive fall and spring semesters for students who continue to qualify for honors program participation, and awards can be applied toward tuition, fees, housing, and books.

www.govst.edu/scholarships

HONORS SCHOLARSHIPS

Students applying on or before November 15 may qualify for GSU merit scholarships. Awards vary based upon academic profile and available funds. Candidates directly admitted to the freshmen class with unweighted GPA between 2.75 and 3.75 considered for merit scholarships, as funds are available.

Ideal candidates for Presidential, Provost, and Dean's scholarships will meet the following criteria:

- 3.75 GPA unweighted on a 4.0 scale
- Complete application by November 15
- Complete Presidential Scholarship application by December 1
- Complete FAFSA in October

Presidential Scholarship:

(up to two awards each fall):

Full tuition, fees, housing, \$500 book stipend per semester, and \$1,000 meal plan per semester.

Provost's Scholarship:

\$4,000 per semester (\$8,000 for the year)

Dean's Scholarship:

\$3,500 per semester or \$7,000 for the year

HONORS PROGRAM

The GSU Honors Program takes a distinct approach to the undergraduate experience. Emphasis is placed on developing personal, professional, and leadership potential through experiential learning opportunities such as internships, conference presentations, and study abroad. Students in the GSU Honors Program represent the university population as a whole.

govst.edu/honors

SPECIAL POPULATIONS RESOURCES

- Undocumented Students: GSU admits students regardless of undocumented status. Undocumented students follow the same admission procedures as all potential Governors State applicants. www.govst.edu/undocumented-students
- International Students: Diversity is the heartbeat of Governors State University and our multicultural students and staff are the rhythm. govst.edu/ois
- Veterans: GSU has been named Best of the Best for Vets four years in a row by U.S. Veterans Magazine. govst.edu/veterans
- Students with Disabilities: Access Services for Students with Disabilities is here to support students and help meet their individual needs through the accommodation of accessibility services.

govst.edu/disability-services

AIM HIGH

Governors State University's AIM HIGH scholarships may qualify new first-year students and transfer students to receive guaranteed scholarships for tuition cost. Learn how GSU is investing in your present so that you can invest in your future.

govst.edu/aimhigh

UNDERGRADUATE STUDENTS

GPA THRESHOLD	AWARD TOTAL	ANNUAL
3.5 +	\$24,000	\$6,000
2.75	\$16,000	\$4,000

- Freshman AIM HIGH is renewable up to four years (or 8 consecutive semesters) if renewal criteria is met.
- Transfer students from community colleges must have earned associates degrees to qualify for AIM HIGH grants.
- Transfer students with 24 or more transfer credits from any four-year institutions do not require earned associates degrees.
- Transfer students with 23 or less transfer credits from four-year institutions will be considered for First-Year AIM HIGH criteria and award amounts
- Must meet all AIM HIGH requirements. Please visit govst.edu/aimhigh for full list.

EXPLORE SCHOLARSHIPS

Your hard work pays off at Governors State University. Apply now to be considered for scholarships for artists, athletes, and academic merit.

govst.edu/scholarships

UNIVERSITY TUITION AND FEES*



In state cost of tuition and fees	3.5 - 4.0 GPA \$6,000 AIM HIGH Scholarship	2.75- 3.49 GPA \$4,000 AIM HIGH Scholarship
LIVING AT HOME* \$13,088 (Tuition & Fees) <i>Degree \$52,325</i>	\$7,088 Remaining tuition & cost <i>Degree \$28,352</i>	\$9,088 Remaining tuition & cost <i>Degree \$36,352</i>
LIVING ON-CAMPUS** \$20,866 (Tuition, Fees, Housing & Meal Plan) <i>Degree \$83,544</i>	\$14,886 Remaining tuition & cost <i>Degree \$59,444</i>	\$16,886 Remaining tuition & cost <i>Degree \$67,544</i>

govst.edu/finaid

*Based on 2022 - 23 costs, 15 credit hours, fall and spring semesters.

**Based on semi-suite double occupancy option plus SILVER meal plan.

DATES TO REMEMBER

OPEN HOUSE DATES



2022

10 A.M.
TO 1 P.M.

- October 8
- November 19



2023

10 A.M.
TO 1 P.M.

- February 11
- March 25
- April 15
- June 10
- July 22



TO REGISTER FOR OPEN HOUSE VISIT

<https://www.govst.edu/openhouse/>



PLAN A VISIT

Explore the GSU campus either in person or virtually. GSU student ambassadors are available to take visitors on guided tours of the campus, while answering questions for prospective students and their families.

Schedule your in-person visit here: <https://apply.govst.edu/portal/campustour> or tour the campus virtually <https://www.govst.edu/visit-us/#>.

MEET OUR GSU TEAM



Paul McGuinness
Vice President for Student
Affairs & Enrollment
Management
pmcguinness@govst.edu
708.235.7308



Lise Schneider
Director of Admissions
lschneider@govst.edu
708.534.7059



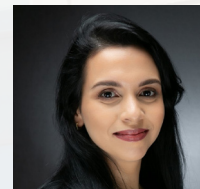
Craig Berry
Associate Director of
Recruitment, Outreach
cberry@govst.edu
708.534.4492



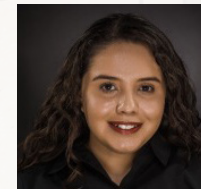
Collice King
Associate Director of
Admissions Processing
cking@govst.edu
708.534.7272



Emmanuel Lopez
Assistant Director
Transfer Admissions
elopez6@govst.edu
708.235.8528



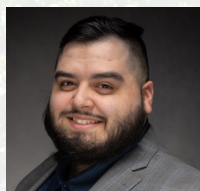
Melinda Arce Gudino
Admissions Counselor
marce-gudino@govst.edu
708.235.7504



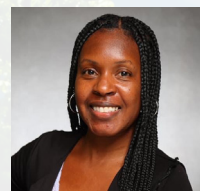
Cynthia Gomez
Recruiting Specialist
cgomez2@govst.edu
708.534.7897



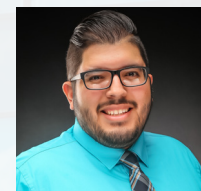
Jessica Specht
Director, DDP Program
jspecht@govst.edu
708.534.4494



Alexandro Venegas
DDP Transfer Specialist
avenegas2@govst.edu
708.235.7455



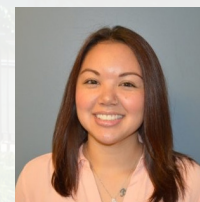
Sharita Walker
DDP Transfer Specialist
swalker3@govst.edu
708.235.7536



Juan Gonzalez
DDP Transfer Specialist
jgonzalez11@govst.edu
708.234.7534



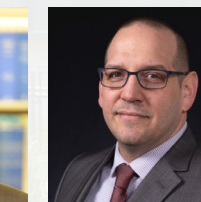
Angela Szcapanik-Sanchez
Director of Student Disability
Services
aszczapanik-sanchez@govst.edu
708.235.3968



Corrine Martin
Director, Auxiliary Services
and Housing
cmartin8@govst.edu
708.235.7113



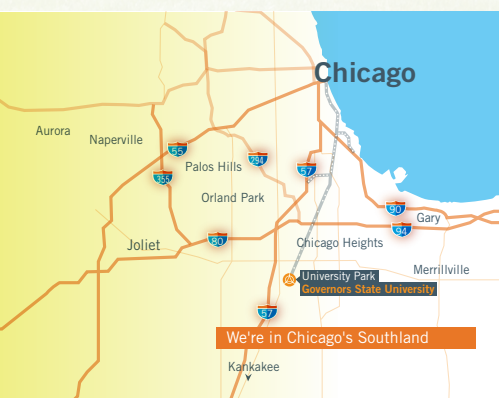
John Perry
Director of Financial Aid
jperry@govst.edu
708.534.4483



Jason Vignone
Director of Graduate
Admissions and Retention
jvignone@govst.edu
708.235.7325



Anthony Bates
Athletic Director/Men's Head
Basketball Coach
abates99@govst.edu
708-235-7431



MILES TO GSU:

- Aurora (62 miles)
- Chicago Heights (7.5 miles)
- Downtown Chicago (36 miles)
- Gary, IN (31 miles)
- Joliet (24 miles)
- Kankakee (29 miles)
- Merrillville, IN (24 miles)
- Naperville (42 miles)
- Orland Park (20 miles)
- Palos Hills (22 miles)

60 MINUTE METRA RIDE TO CHICAGO