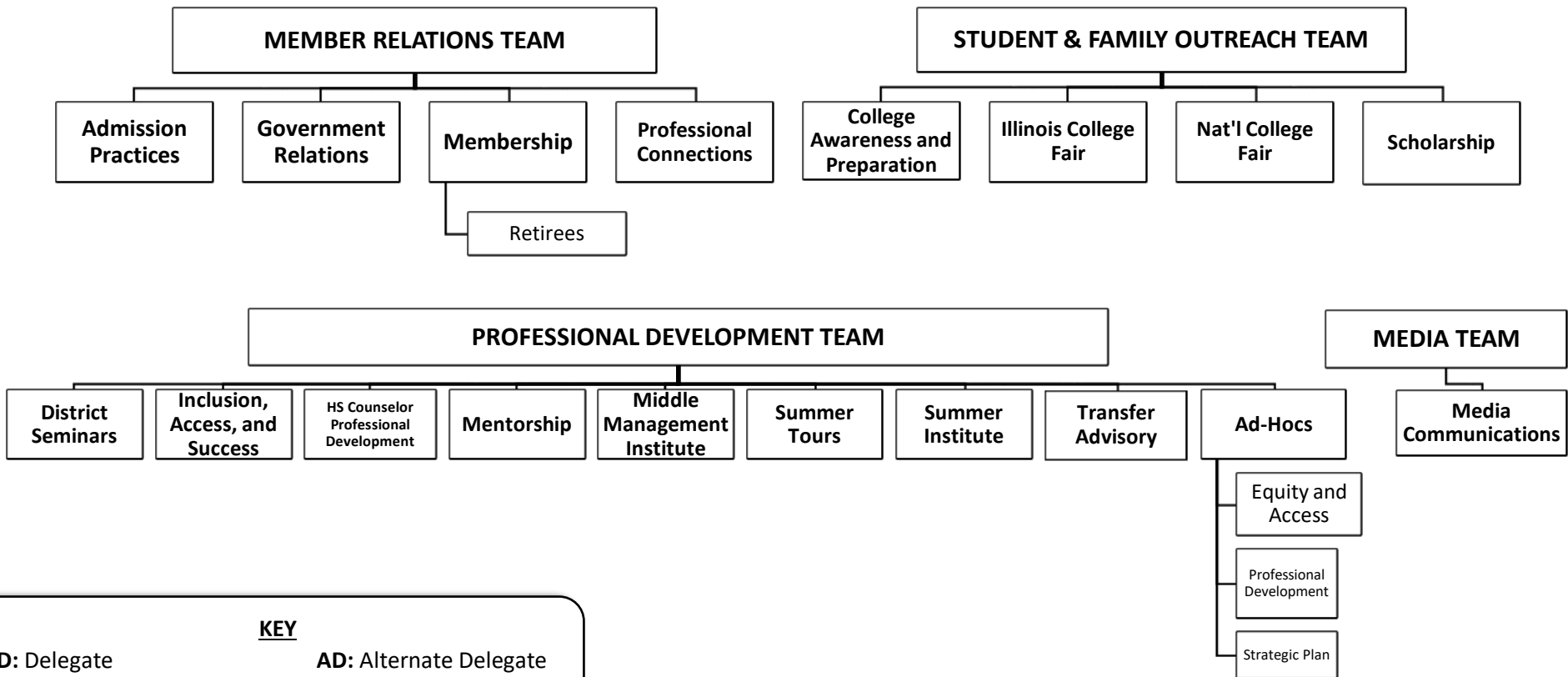


# 2022-2023 EXECUTIVE BOARD STRUCTURE

## THE CABINET

<b>President (D)</b> <i>Brian Hodges</i> Finance Member	<b>President-Elect (AD)</b> <i>Paul Welsh</i> Conference Chair Finance Member	<b>Past-President (D)</b> <i>Tony Minestra</i> Credentials Chair Nominating Chair Past Presidents Advisory Chair Strategic Plan Chair Finance Member	<b>Treasurer</b> <i>Josie Blasdel</i> Finance Chair	<b>Treasurer-Elect</b> <i>Mike Gavic</i> Prof. Dev. Grants Chair IL College Fair Member Finance Member	<b>Past-Treasurer</b> <i>Eric Ruiz</i> Conference Member Finance Member	<b>Secretary</b> <i>Kathryn Hankamp</i> Media Member Finance Member (NV)	<b>Executive Director (NV)</b> <i>Erin Hoover</i> Conference Member Finance Member
---	--	--	---	--	--	---	---

**COUNCIL TEAMS & COMMITTEES: 4 Directors & 7 Delegates co-chair the following teams and oversee that team's committees.**  
**Council Team Directors:** *Christian Brown, Kelly Dutmers, Maddie Corder and Betsy Stevens* **Delegate Directors:** *Becki Bellito, Sylvia Hernandez, Derek Brinkley, Sharon Williams, Joe Freeman, Evan Wilson and Shawn Wochner.*



**KEY**  
**D:** Delegate                      **AD:** Alternate Delegate  
**NV:** Non-voting Board Member

# IACAC EXECUTIVE BOARD STRUCTURE

This document is intended to capture the organizational chart and structure of the IACAC Executive Board Cabinet, Council and Committee make-up in a given year. It will be updated each year by the Secretary. The Cabinet section of this document outlines the members who serve on the Cabinet as well as their assignments outlined in the IACAC by-laws.

The Council Teams & Committees section identifies which committees function under each of the 4 Council Teams. Directors and Delegates co-chair one of these 4 Council Teams. In addition to their roles as co-chairs, they serve as liaisons to specific committees within a team. As liaisons, they guide a particular committee and act as a conduit/messenger between the committee and the Executive Board. For example, a Council Team Director could be assigned to co-chair the Member Relations Council Team therefore overseeing the interaction among all committees within that team. Additionally, that Director would also be assigned as the liaison to at least one specific standing or ad-hoc committee. The Directors and Delegates are often referred to as “The Council.”

## 2022-2023 ASSIGNMENTS

COMMITTEES	COUNCIL TEAM	LIAISON	COMMITTEE CHAIR(S)
Admission Practices	Member Relations	Joe Freeman	David Boyle, Allegra Giulietti-Schmitt, Keegan White
College Awareness and Preparation	Student and Family Outreach	Christian Brown	Faye Ikner
Conference	<i>Cabinet</i>	Paul Welsh	Chrissy Grotzke (Conference coordinator)
Credentials	<i>Cabinet</i>	Tony Minestra	
District Seminars	Professional Development	Joe Freeman	Annette Braden, Brad Kain, April Lynch
Elevate Ad-Hoc	<i>Cabinet</i>	Brian Hodges	Courtney Wallace, Angie Cooksy
Equity and Access Ad-Hoc	<i>Cabinet</i>	Brian Hodges	Amy Thompson, Sharon Williams
Finance	<i>Cabinet</i>	Josie Blasdel	
Government Relations	Member Relations	Evan Wilson	Kristina Luster, Alejandro Campos
High School Counselor Professional Development	Professional Development	Christian Brown	Beth Gilfillan, Myskeshia Mitchell
Illinois College Fair	Student and Family Outreach	Betsy Stevens	Sue Fowler, Tara Brewer, Kelli Allen
Inclusion, Access, and Success	Professional Development	Sharon Williams	Sarah Espinosa, Branden Delk, Lupe Flores, Dr. Melissa Valen
Media Communications	Media	Kathryn Hankamp	Traci Flowers, Luis Alarcon, Cody Dailey
Membership	Member Relations	Maddie Corder	Josh Stober, Sarah Goldman, Alex Hughes
Membership (Retirees)	Member Relations	Maddie Corder	Kathy Holmberg, B.C. Juettner, Lianne Musser
Mentorship	Professional Development	Kelly Dutmers	Kevin Coy, Jill Homerding
Middle Management Institute	Professional Development	Derek Brinkley	Wendy Downing, Robert Olivieri, Jes King
National College Fair	Student and Family Outreach	Sylvia Hernandez	Scott Carlson, Rejeannda Robinson, Jennifer Stroh
New Counselor Institute	Professional Development	Derek Brinkley	Kenneth Guthrie, Maira Rodriguez, Bettie Mattison-Farris
Nominating	<i>Cabinet</i>	Tony Minestra	
Professional Development Ad-Hoc	<i>Cabinet</i>		Joe Freeman, Rejeannda Robinson
Professional Development Grants	<i>Cabinet</i>	Mike Gavic	
Professional Connections	Member Relations	Maddie Corder	Meghan Chrum, Morgan Johnson, Robyn Moreth
Scholarship	Student and Family Outreach	Sylvia Hernandez	Lauren Yates, Jamie Newsom, Chris Merle
Strategic Plan Ad-hoc	<i>Cabinet</i>	Tony Minestra	Erin Hoover, Delegate Directors
Summer Tours	Professional Development		Sarah McDougal, Paul Lichtenheld, Kara Dollaske
Transfer Advisory	Professional Development	Shawn Wochner	Nick DeFalco, Holly Pflum, April Ponte