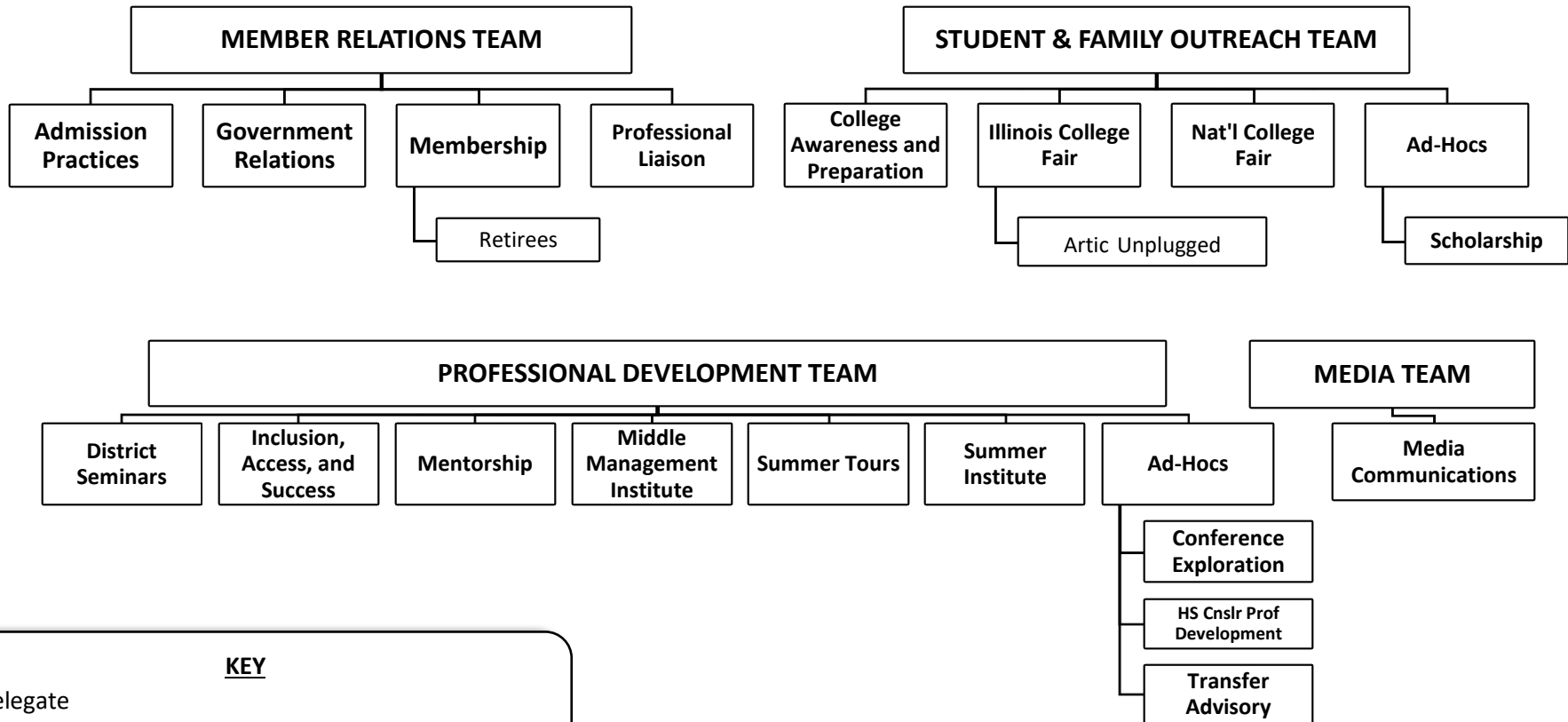


# 2016-2017 EXECUTIVE BOARD STRUCTURE

## THE CABINET

<b>President</b> <i>Michelle Rogers</i> Finance Member	<b>President-Elect (D)</b> <i>Roberto Suarez</i> Conference Chair Finance Member	<b>Past-President, Pro Tempore (D)</b> <i>Todd Burrell</i> Credentials Chair Nominating Chair Past Presidents Advisory Chair Strategic Plan Chair Finance Member	<b>Treasurer</b> <i>Kathy Major</i> Finance Chair	<b>Treasurer-Elect</b> <i>Chrissy Grotzke</i> Professional Dev. Grants Chair IL College Fair Member Finance Member	<b>Past-Treasurer</b> <i>Courtney Wallace</i> Conference Member Finance Member	<b>Secretary</b> <i>Sarah Daugherty</i> Media Member Finance Member	<b>Executive Assistant (NV)</b> <i>Linda Haffner</i> Conference Member Finance Member
--	---	--	---	--	---	--	--

**COUNCIL TEAMS & COMMITTEES: 4 Directors & 9 Delegates co-chair the following teams and oversee that team's committees. Council Team Directors include Jill Diaz, Emily Schubert, Brian Hodges & Jamie Simon. Delegate Directors include Allegra Giulietti-Schmitt, Stephanie Szczepanski (chief delegate), Nate Bargar, Amy Belstra, Megan O'Rourke, Kim Wiley, Traci Flowers, Mike Ford & Eric Ruiz. (Alternate Delegate: Erin Hoover)**



**KEY**  
**D:** Delegate  
**NV:** Non-voting Board Member

# IACAC EXECUTIVE BOARD STRUCTURE

This document is intended to capture the organizational chart and structure of the IACAC Executive Board Cabinet, Council and Committee make-up in a given year. It will be updated each year by the Secretary. The Cabinet section of this document outlines the members who serve on the Cabinet as well as their assignments outlined in the IACAC by-laws. *(For 2016-2017, the President is ineligible to serve as a NACAC delegate as delegates cannot represent the same institution/school; the President-Elect will serve as a Delegate rather than as an Alternate and an Alternate will be named.)*

The Council Teams & Committees section identifies which committees function under each of the 4 Council Teams. Directors and Delegates co-chair one of these 4 Council Teams. In addition to their roles as co-chairs, they serve as liaisons to specific committees within a team. As liaisons, they guide a particular committee and act as a conduit/messenger between the committee and the Executive Board. For example, a Council Team Director could be assigned to co-chair the Member Relations Council Team therefore overseeing the interaction among all committees within that team. Additionally, that Director would also be assigned as the liaison to at least one specific standing or ad-hoc committee. The Directors and Delegates are often referred to as “The Council.”

## 2016-2017 ASSIGNMENTS

COMMITTEES	COUNCIL TEAM	LIAISON	COMMITTEE CHAIR(S)
Admission Practices	Member Relations	A. Belstra	Sandie Gilbert, Jenn Paar-Gross
College Awareness and Preparation	Student and Family Outreach	B. Hodges	Emma Adebayo, Sparkle Hunt, Joel Johnson
Conference	<i>Cabinet</i>	R. Suarez	Roberto Suarez
Conference Exploration Ad-hoc	Professional Development	C. Wallace	Maryanne Kelly
Credentials	<i>Cabinet</i>	T. Burrell	Todd Burrell
District Seminars	Professional Development	N. Bargar	Megan Koester, Robert Yerkan, April Bauer
Finance	<i>Cabinet</i>	K. Major	Kathy Major
Government Relations	Member Relations	J. Simon	Steven Landgraf, Paul Welsh, Jennifer Sloan
High School Counselor Professional Development Ad-hoc	Professional Development	N. Bargar	Chris Merle, Scott Lilly
Illinois College Fair (Articulation Unplugged)	Student and Family Outreach	S. Szczepanski	Carin Smith (Melanie Coffman)
Inclusion, Access, and Success	Professional Development	A. Giulietti-Schmitt	Zak George, Mayra Lagunas, Luis Narvaez
Media Communications	Media	S. Daugherty	Sarah Goldman, Rene Gomez, Erin Hoover
Membership (Retirees)	Member Relations	T. Flowers	Omar Solomon, Michelle Adams, Mike Melinder (R: George Kazlusky, Rob Engleman, Sue Sanders)
Mentorship	Professional Development	E. Schubert	Sara English, Rosa Reiber, Kenya Taylor
Middle Management Institute	Professional Development	C. Wallace	Angie Cooksy, Laura Schutt
National College Fair	Student and Family Outreach	E. Ruiz	Erin Updegraff, Patrick Harker, Stacey Schlaud
Nominating	<i>Cabinet</i>	T. Burrell	Todd Burrell
Past Presidents Advisory	<i>Cabinet</i>	T. Burrell	Todd Burrell
Professional Development Grants	<i>Cabinet</i>	C. Wallace	Chrissy Grotzke
Professional Liaison	Member Relations	K. Wiley	Kristen Doktor, Amy Thompson
Scholarship Ad-hoc	Student and Family Outreach	S. Szczepanski	David Bennett, Tara Brewer, Wallace Holder
Strategic Plan Ad-hoc	<i>Cabinet</i>	T. Burrell	Julie Nelson
Summer Institute	Professional Development	M. O'Rourke	Mike Espinoza, April Ponte, Jamie Simon
Summer Tours	Professional Development	M. Ford	Kato Gupta, Dan Miller
Transfer Advisory Ad-hoc	Professional Development	J. Diaz	Julie Marlatt, Shawn Wochner, Rebecca Popelka