

PLAINFIELD SOUTH HIGH SCHOOL

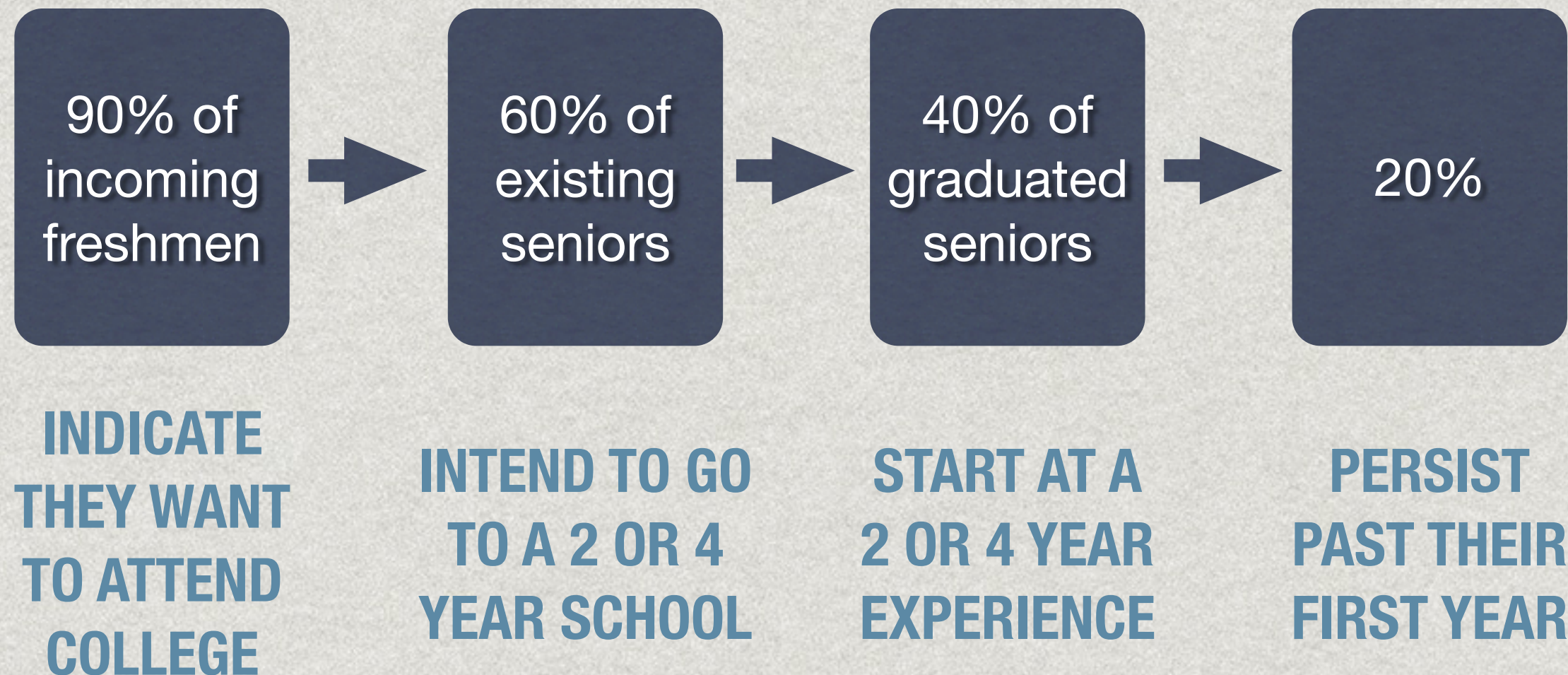
COUNSELING 2.0



Excellence in all we do; Excellence for all we serve

High School graduation is a milestone; It is not a capstone to a student's education!

BY 2020, 80% OF ALL JOBS WILL
REQUIRE A TWO-YEAR, FOUR-YEAR OR
DEGREE/CERTIFICATION PROGRAM



How do we change this trajectory?

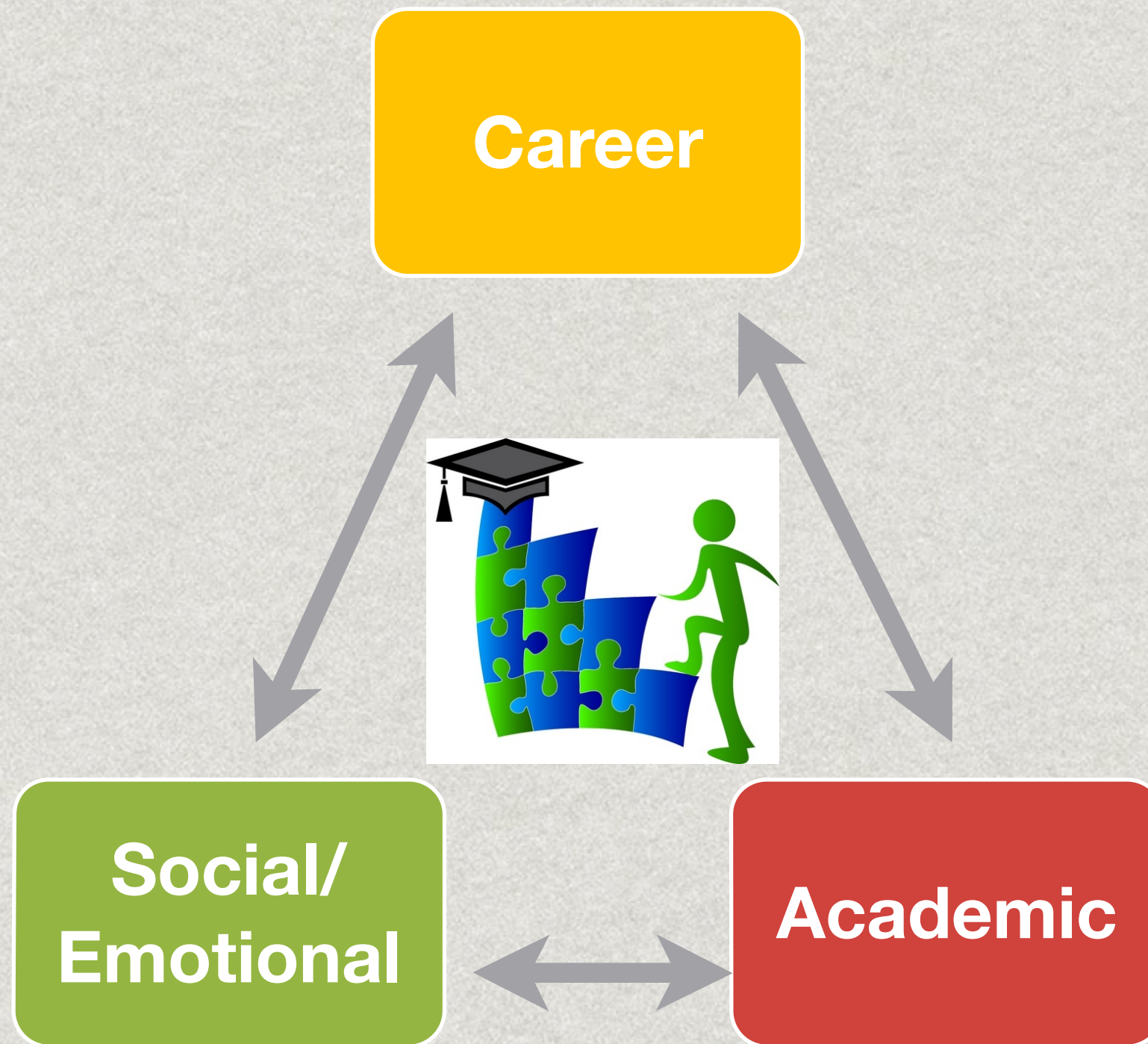
Raise the Bar;
Close the Gaps

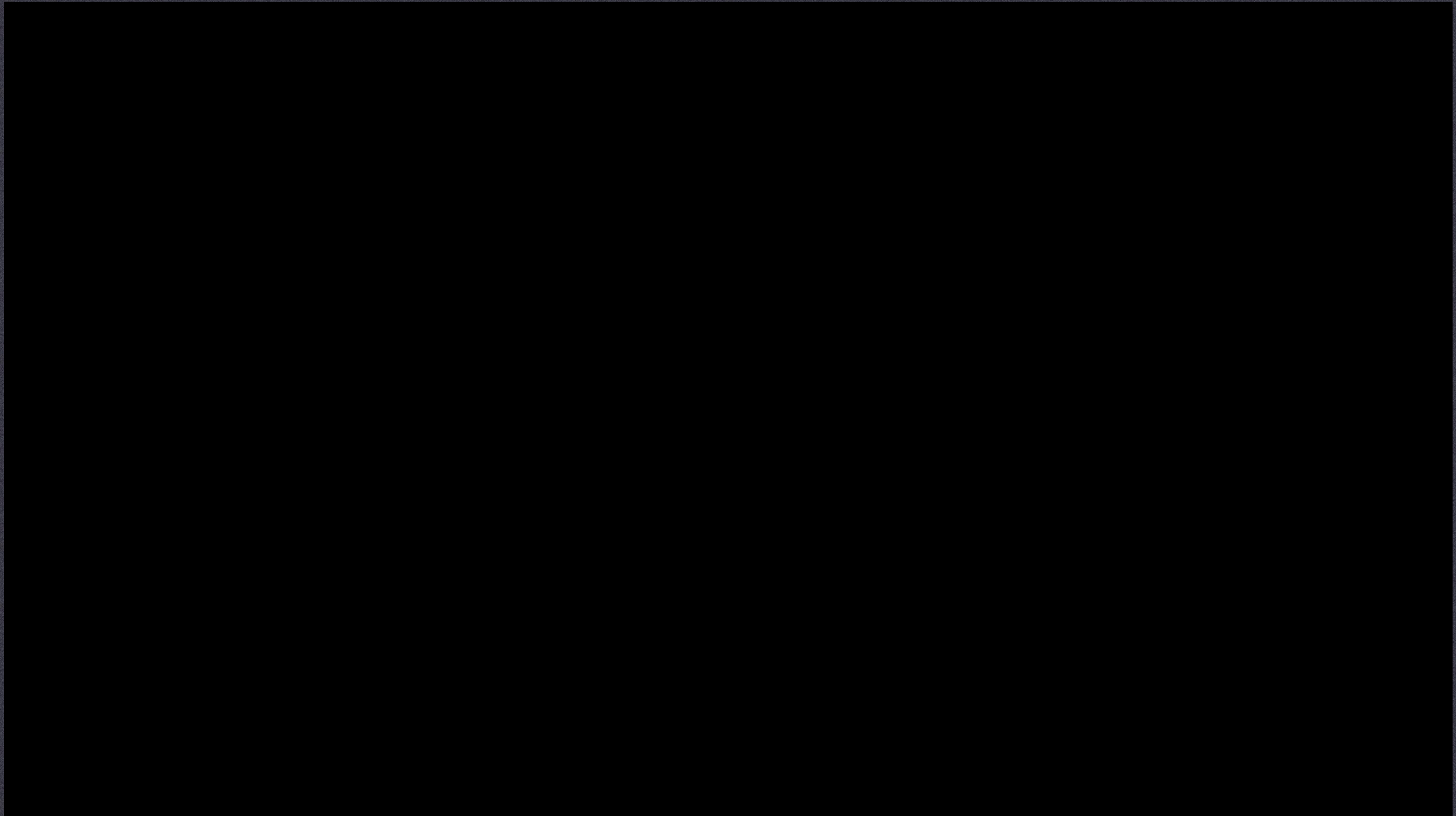
Increase Student
Success

Positive &
Productive
Climate

Increase Rigor &
Engagement

ASCA

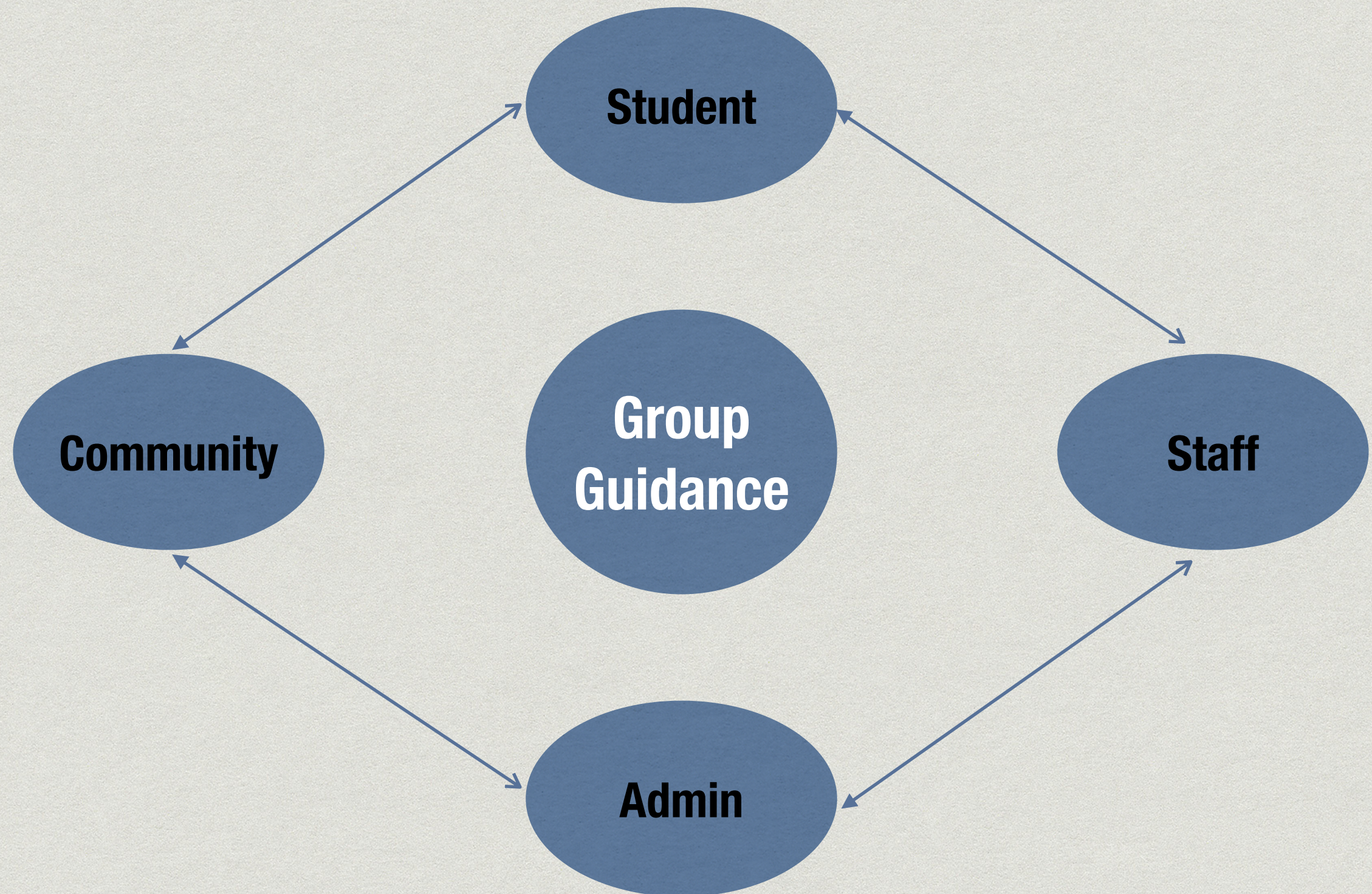




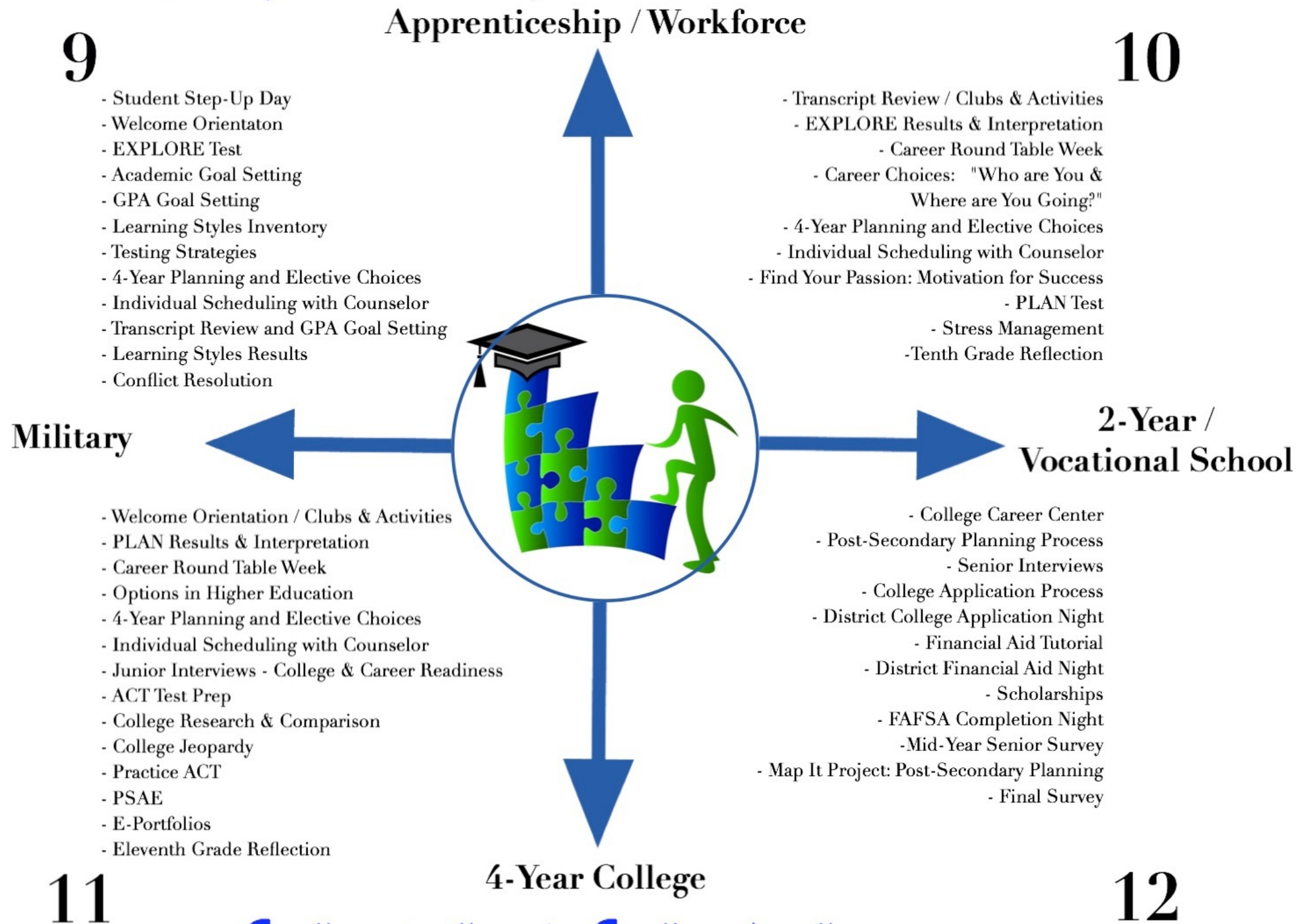
GROUP GUIDANCE

PSHS STUDENT SERVICES

College & Career Readiness



Plainfield South High School Student Services



Excellence in all we do; Excellence for all we serve

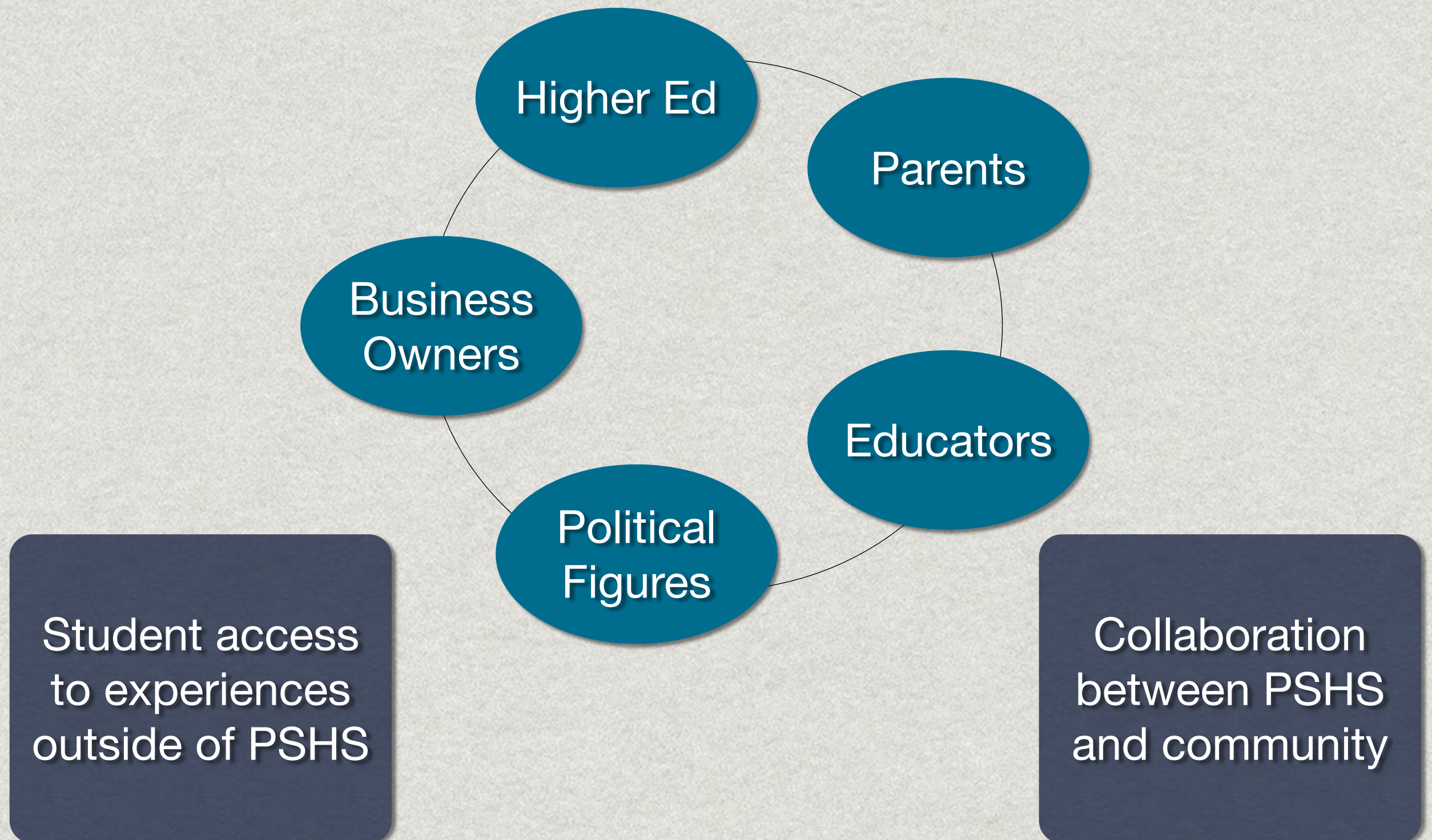
12

PSHS Group Guidance

What does our program look like?

- * 9th/10th: One day/week counselors teach 25-minute lessons during 4A/4B, 5A/5B, 6A/6B
- * 11th: Four full periods/year counselors teach 50-minute lessons during English classes
- * 12th: Students receive monthly/ongoing instruction via classrooms, small groups, individual meetings, and media presentations
- * Curriculum is mapped and aligned/evaluated in accordance with annual Student Needs Assessment
- * Group Guidance teams collaborate weekly; ASCA and RAMP addressed in weekly department meetings

PSHS Community Collaboration



Plainfield South Leadership Corps

Priceless

- * Link Crew (Boomerang Project)
- * Junior/Senior leaders mentor 9th grade students
- * How?
8th-grade Step Up Day / Freshmen Orientation / Bi-weekly small group meetings / Social events
- * Result?
Students mentoring students / Impact on future success / Positive relationships / Positive culture



BROUGHT

STEP-UP DAY 2015

PLAINFIELD SOUTH LEADERSHIP CORPS

COURTESY OF ETHAN MAYER

Challenges

- * Administration must drive this
- * Scheduling Group Guidance
- * Counselor buy-in (changing role)
- * Student buy-in (upper-class students)
- * Collecting valuable data
- * Accountability to reflection / re-evaluation of student needs in order to make data-driven decisions
- * Staff buy-in

STAFF REFLECTIONS

ON GROUP GUIDANCE

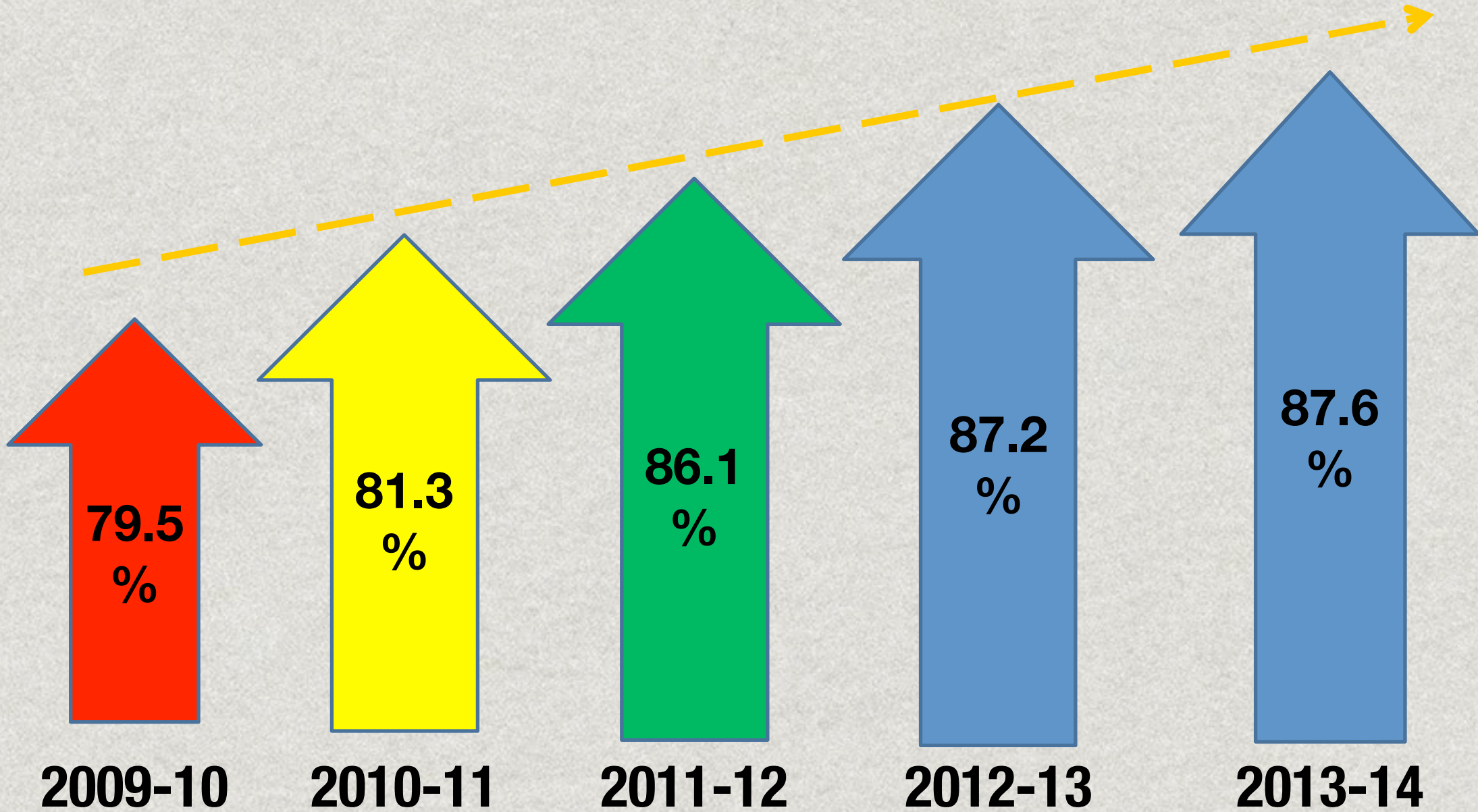
PSHS Results

How are we doing?



Making Success the Only Option

95%



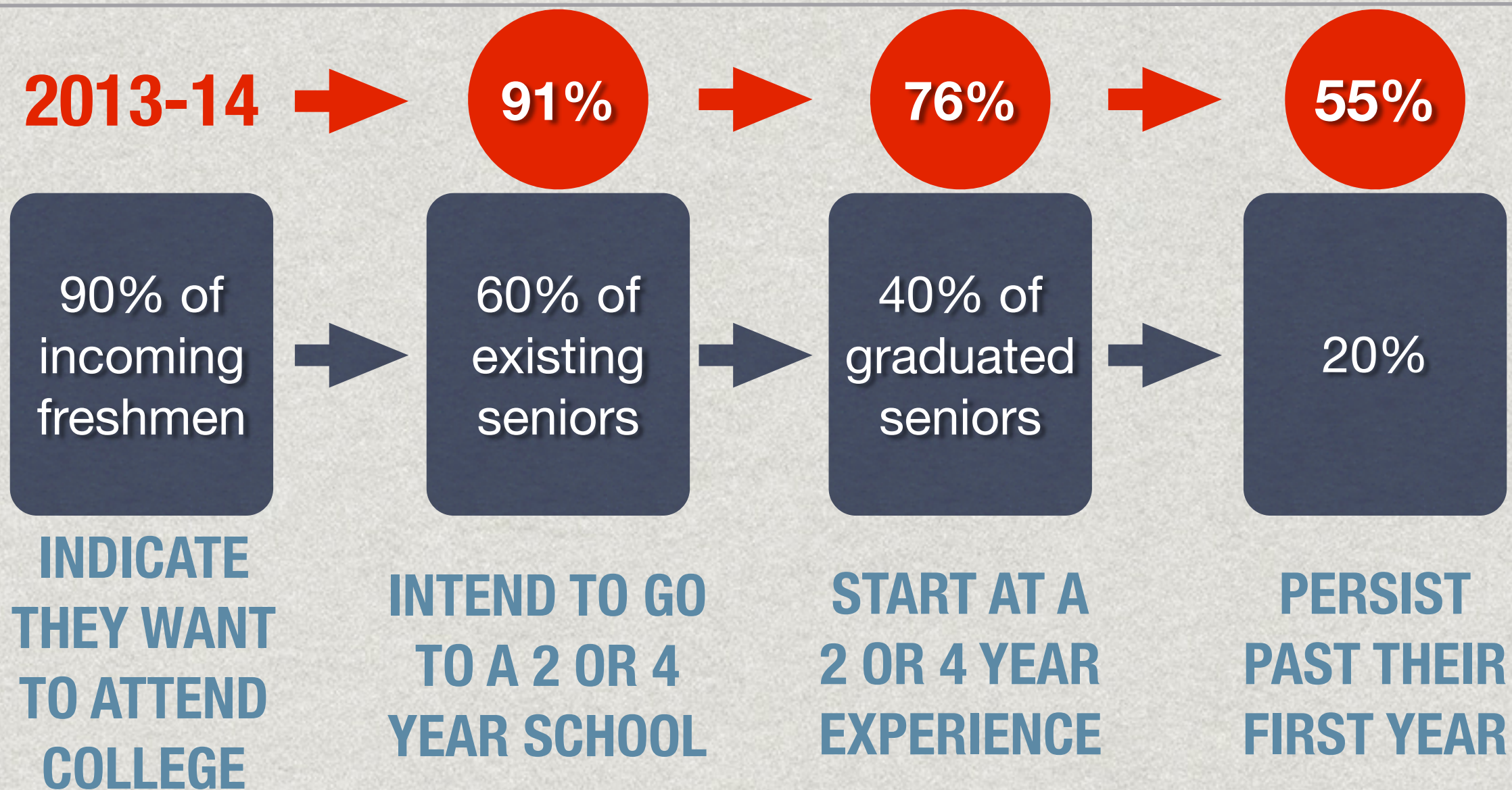
PSHS Results

Student Services

- * Fewer 1-1 counseling concerns (students requesting appointments)
- * Impact on counseling positions
- * Teacher collaboration & buy-in
- * Increased career exposure
- * Post-secondary data
- * Educated students & parents (transcripts)
- * Changing post-secondary trajectory

High school graduation is a milestone;
It is not a capstone to a student's education!

BY 2020, 80% OF ALL JOBS WILL
REQUIRE A TWO OR FOUR YEAR
DEGREE/CERTIFICATION PROGRAM



QUESTIONS?

LEGAN@PSD202.ORG