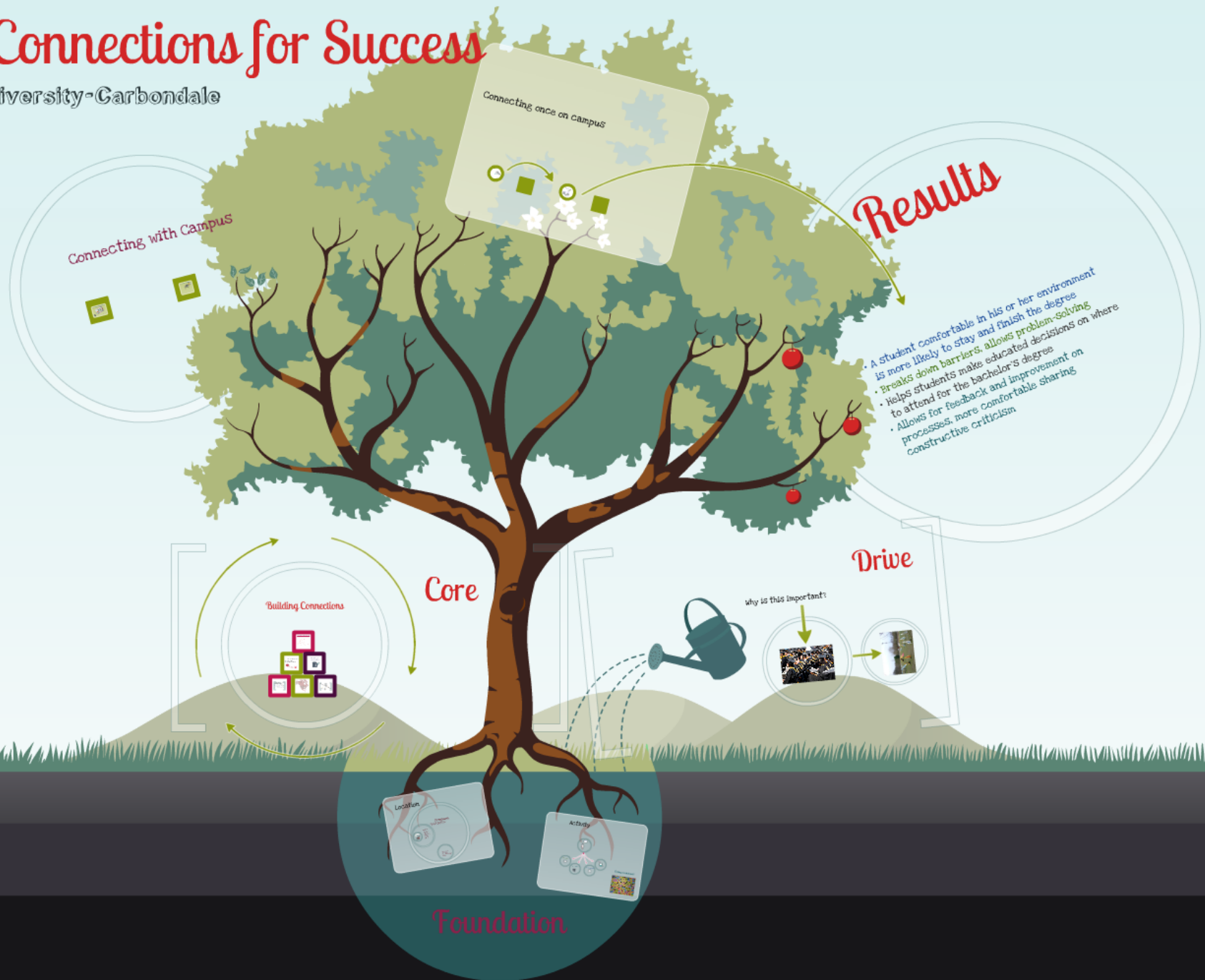


# Building Connections for Success

Southern Illinois University-Carbondale

Amanda Sutton

Tosha Baker

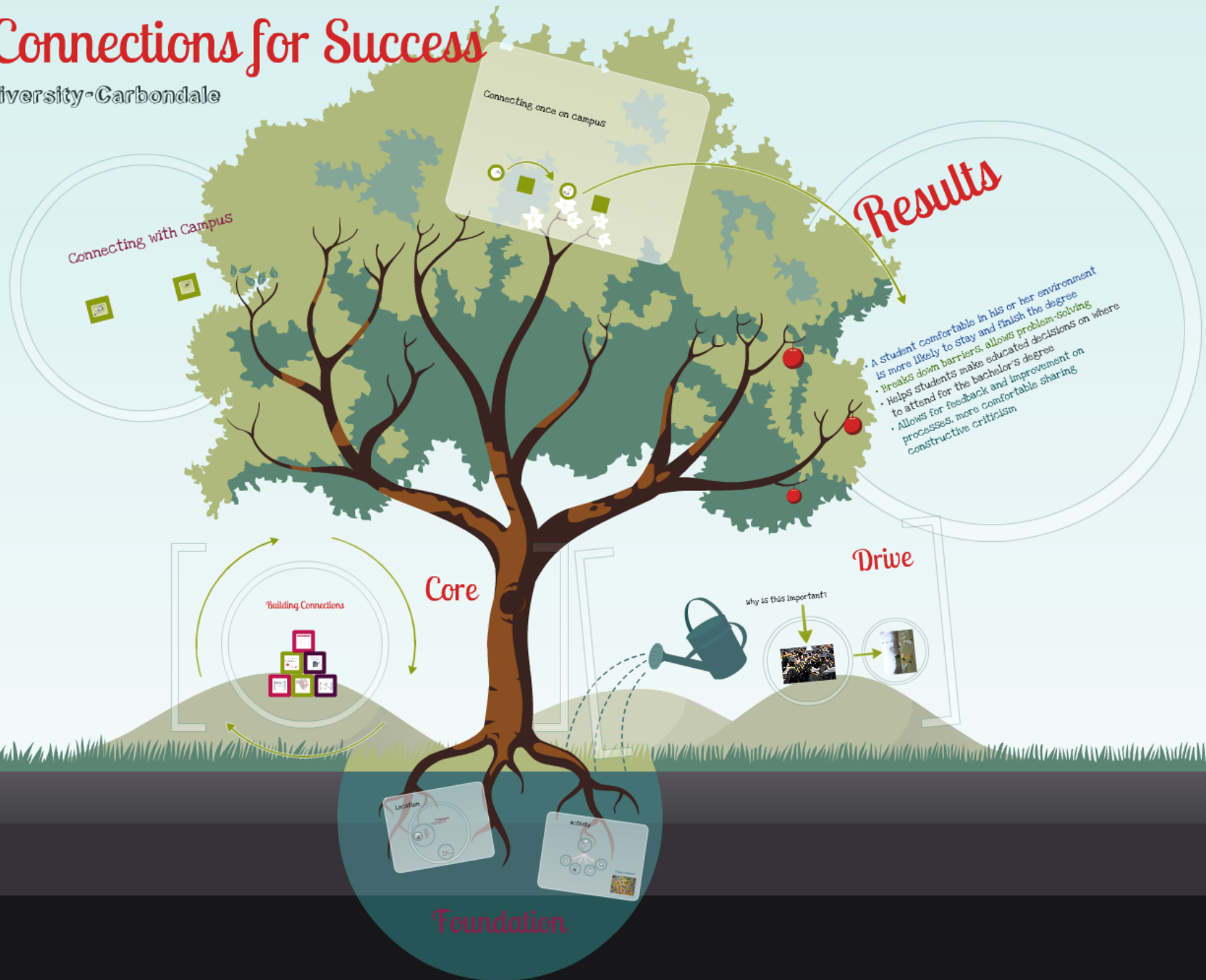


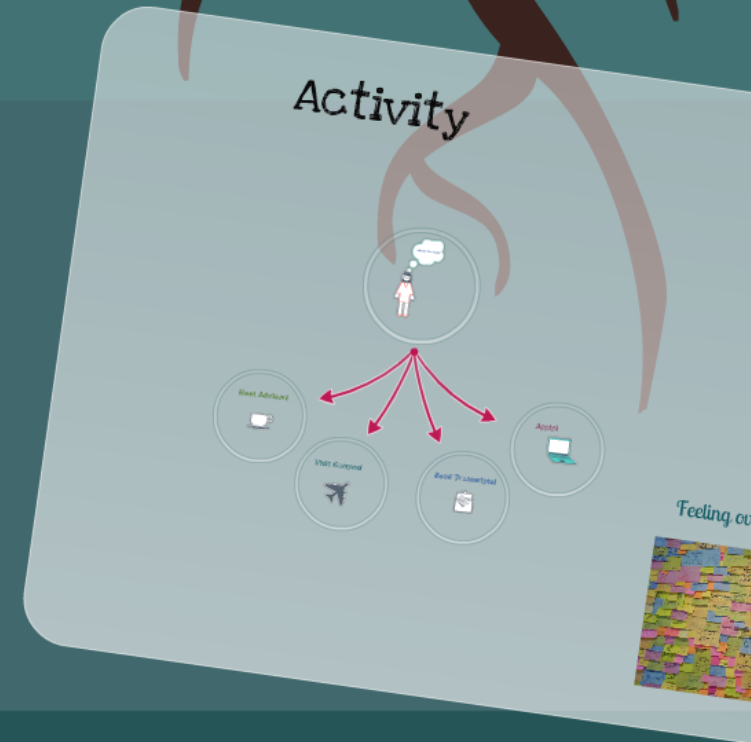
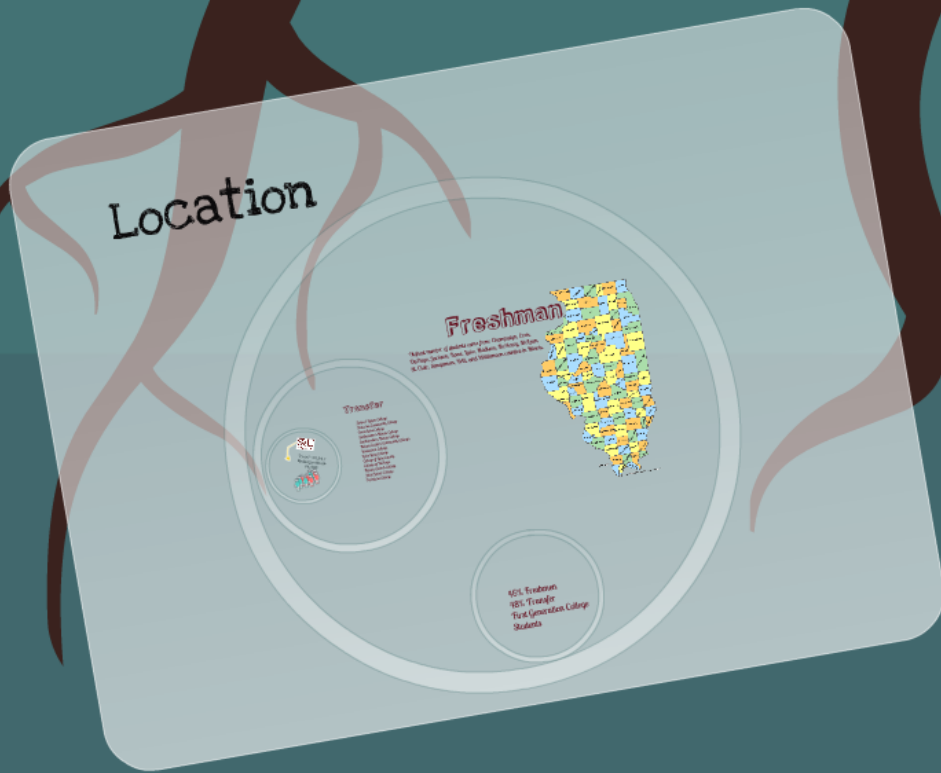
# Building Connections for Success

Southern Illinois University-Carbondale

Amanda Sutton

Tosha Baker





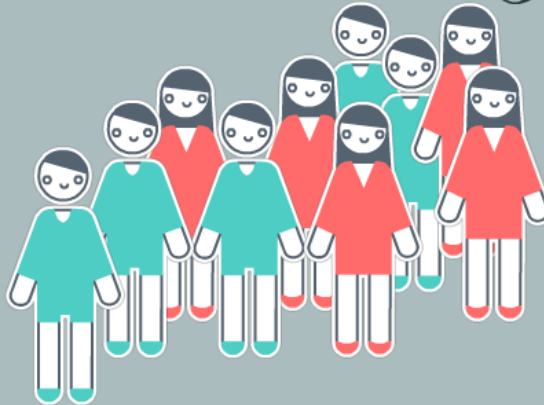
# Foundation

# Location





Total- 18,847  
Undergraduate  
14,130



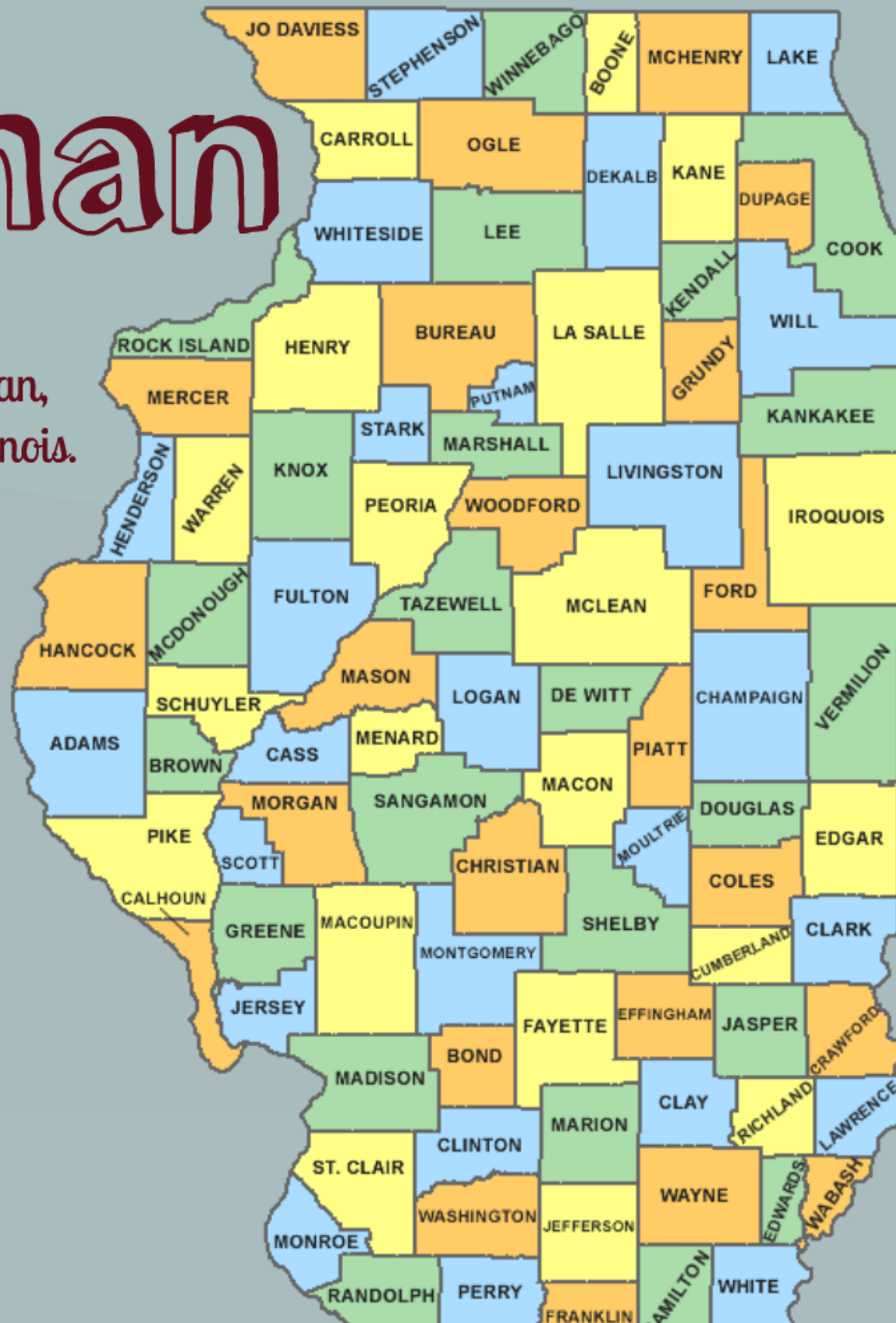
# Transfer

John A Logan College  
Shawnee Community College  
Rend Lake College

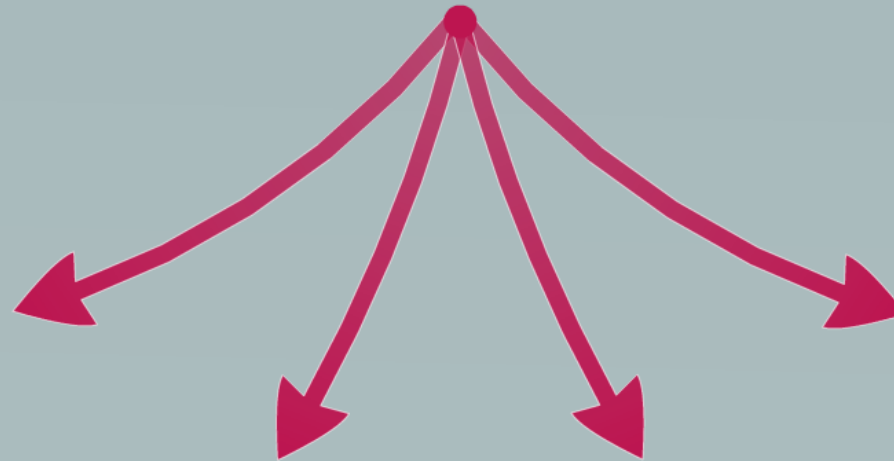
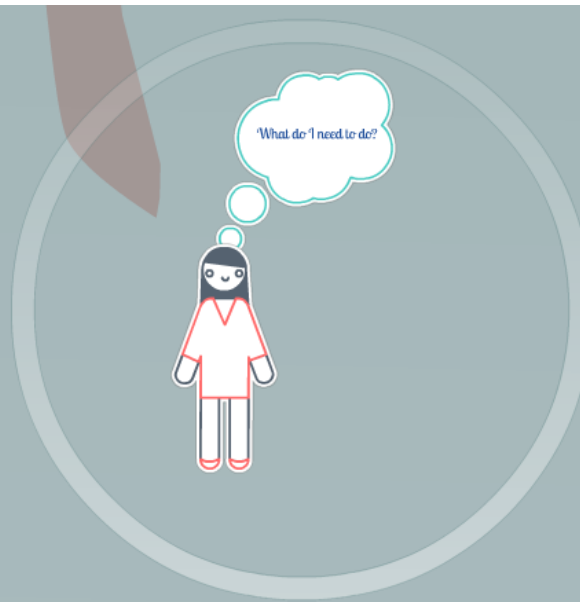
Southwestern Illinois College

# Freshman

Number of students came from: Champaign, Cook, Jackson, Kane, Lake, Madison, McHenry, McLean, Sangamon, Will, and Williamson counties in Illinois.



46% Freshmen  
48% Transfer  
First Generation College  
Students



Meet Advisor!



Visit Campus!



Send Transcripts!



Apply!



# Apply!



# Send Transcripts!





# Visit Campus!



# Meet Advisor!



What do I need to do?



# Activity

# Feeling overwhelmed?



# Drive

why is this important?







Impacts the students path towards graduation





Identifies student/staff obstacles

# Core

## Building Connections



## Service Centers at 8 local community colleges

Visibility on the community college campus

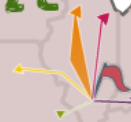
Identifying articulation needs

Programming on the community college campuses

Connections between SIU and community college

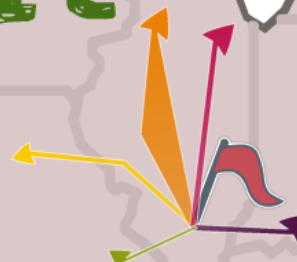
Bringing groups to campus for visits and orientation

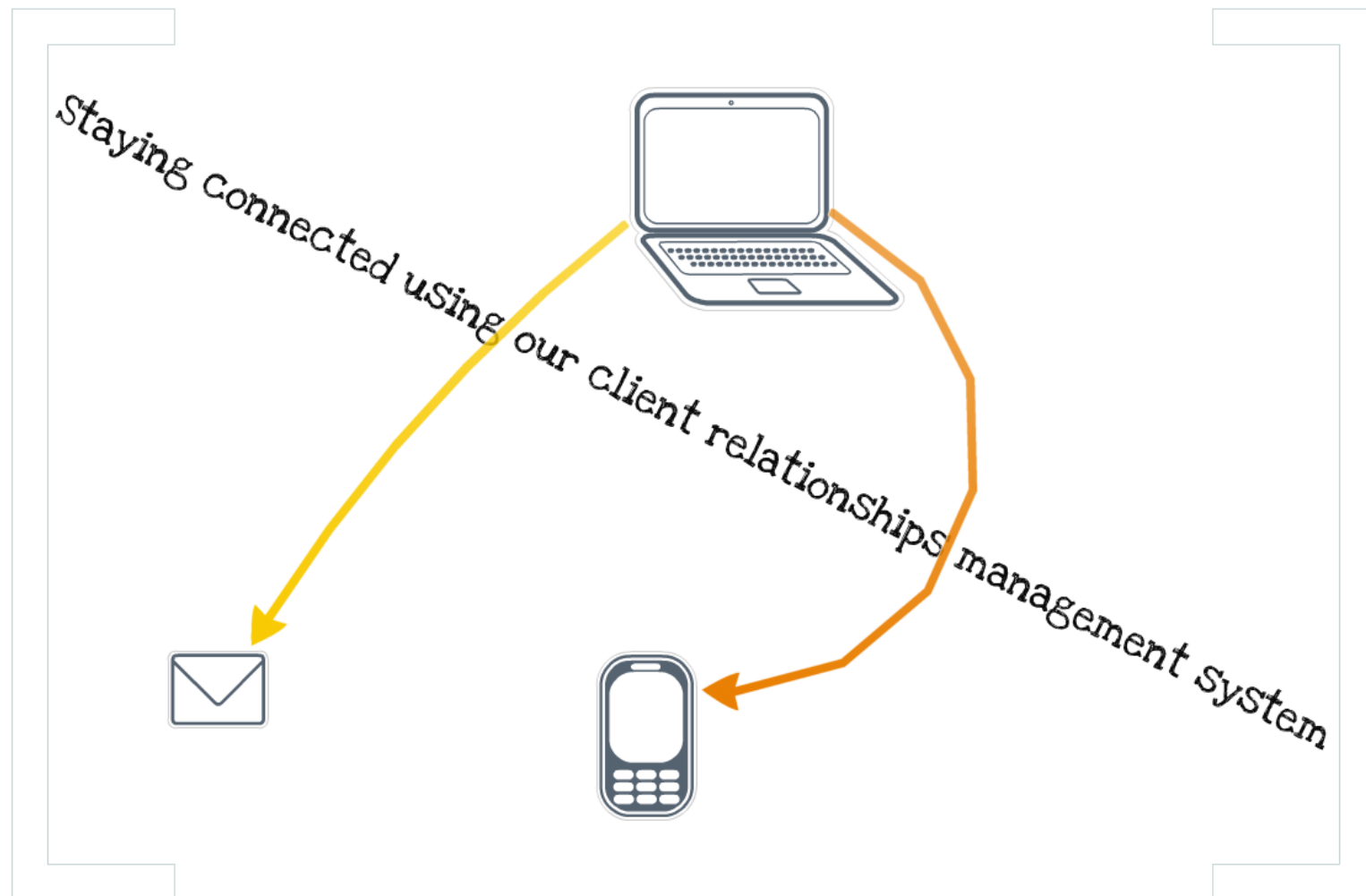
# Territory Management





# Territory Management





## ✦ Connections through Sharing

- ✦ Individualized visits  
Recruiters share their stories



# Dual Admission Program and UCOL 100 course Series



# High School & Community College Counselor Events

---



# Connecting with Campus



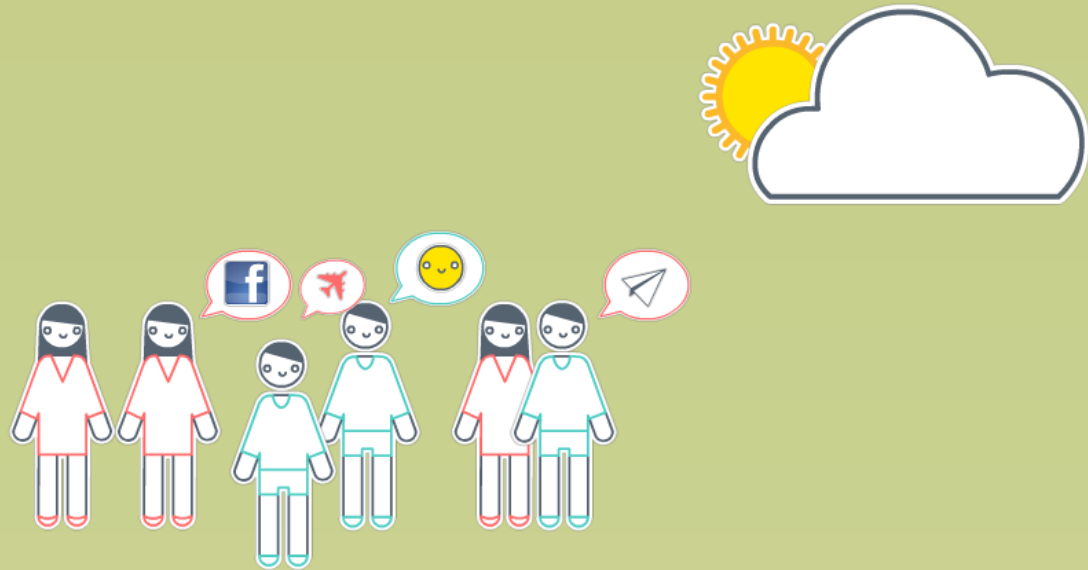
# LONG DISTANCE RELATIONSHIPS



Day long **orientation** for all new students (March - July)

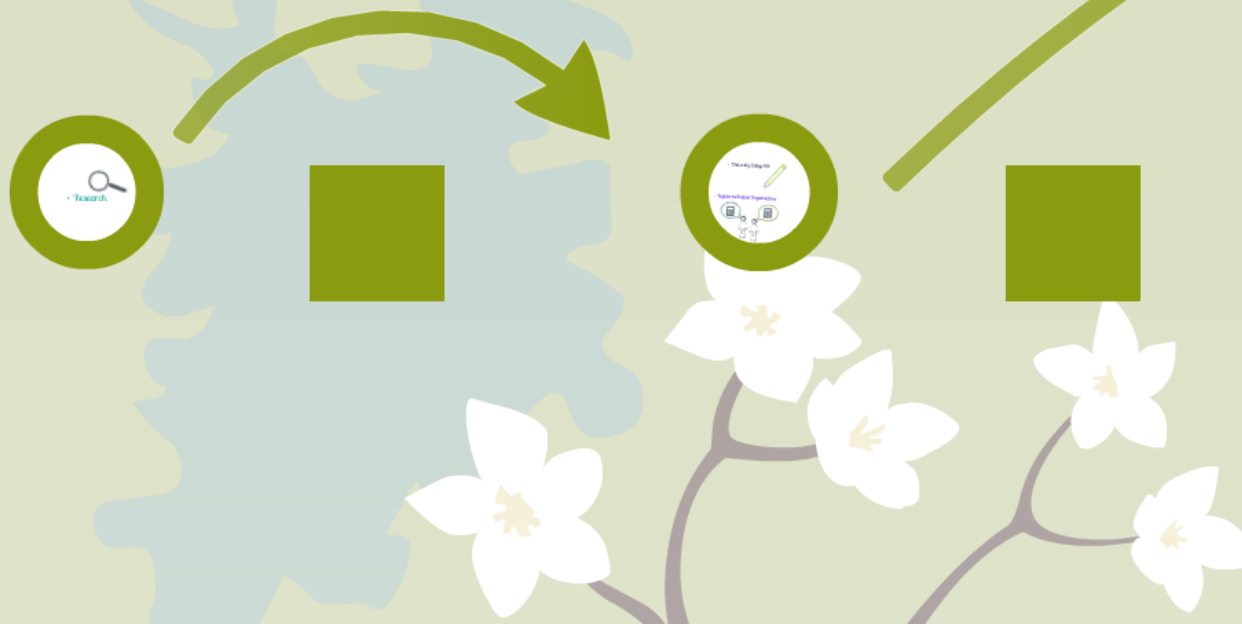


# CULTURE SHOCK/HOMESICK



**Intentional** programming during move-in weekend  
and  
the first couple of weeks of classes

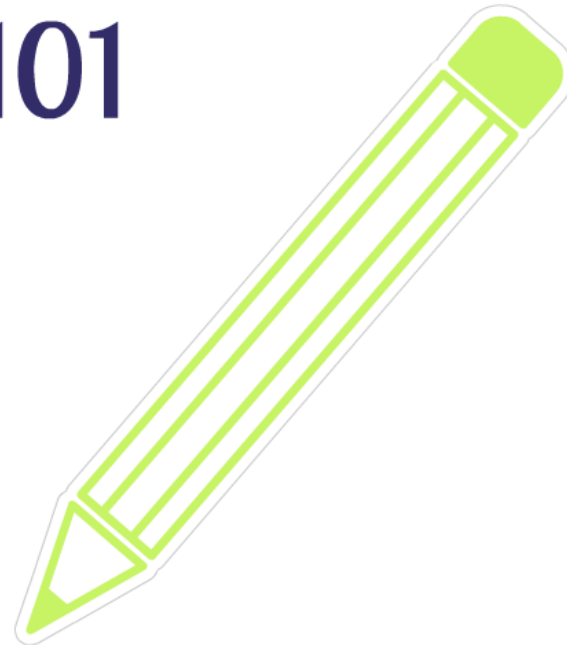
# Connecting once on campus





- Research

- *University College 101*



# • Registered Student Organizations






# Results

- A student comfortable in his or her environment is more likely to stay and finish the degree
- Breaks down barriers, allows problem-solving
- Helps students make educated decisions on where to attend for the bachelor's degree
- Allows for feedback and improvement on processes, more comfortable sharing constructive criticism

Drive

important?

- 
- A student comfortable in his or her environment is more likely to stay and finish the degree
  - Breaks down barriers, allows problem-solving
  - Helps students make educated decisions on where to attend for the bachelor's degree
  - Allows for feedback and improvement on processes, more comfortable sharing constructive criticism